

CRLF2 Antibody Antibody

Product Information

Catalog No.:	FNab09772
Size:	100 μ g
Form:	liquid
Purification:	Immunogen affinity purified
Purity:	\geq 95% as determined by SDS-PAGE
Host:	Rabbit
IsoType:	IgG
Storage:	PBS with 0.02% sodium azide and 50% glycerol pH 7.3 , -20°C for 24 months (Avoid repeated freeze / thaw cycles.)

Background

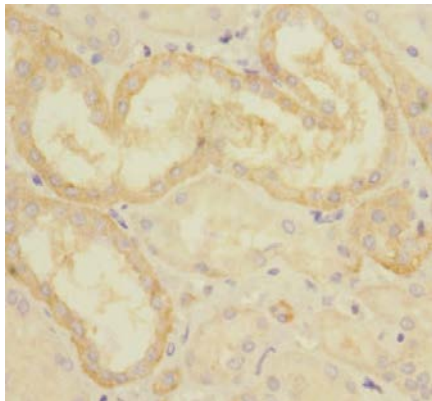
Receptor for thymic stromal lymphopoietin (TSLP). Forms a functional complex with TSLP and IL7R which is capable of stimulating cell proliferation through activation of STAT3 and STAT5. Also activates JAK2 (By similarity). Implicated in the development of the hematopoietic system.

Immunogen information

Immunogen:	Cytokine receptor-like factor 2 protein
Synonyms:	Cytokine receptor-like factor 2, Cytokine receptor-like 2, IL-XR, Thymic stromal lymphopoietin protein receptor, TSLP receptor, CRL2, ILXR, TSLPR
Uniprot ID :	Q9HC73

Application

Specificity:	Human; other species are not tested. Please decide the specificity by homology
Tested Application:	ELISA, IHC
Recommended dilution:	IHC:1:20-1:200
Image:	



Immunohistochemistry of paraffin-embedded human liver tissue with FNab09772 at dilution 1:100