

Recombinant Human MAP1LC3A

| | |
|---------------------------|---|
| Catalogue No.: | P6665 |
| Synonyms: | ATG8E, Autophagy related protein LC3 A, Autophagy related ubiquitin like modifier LC3 A, Autophagy-related protein LC3 A, Autophagy-related ubiquitin-like modifier LC3 A, LC3, LC3A, MAP1 light chain 3 like protein 1, MAP1 light chain 3-like protein 1, MAP1A/1B light chain 3 A, MAP1A/MAP1B LC3 A, MAP1A/MAP1B light chain 3 A, MAP1ALC3, MAP1BLC3, Map1lc3a, Microtubule associated proteins 1A/1B light chain 3 |
| Species: | Human |
| Uniprot ID: | Q9H492 |
| Expression Region: | 1-120 |
| Source: | E.Coli |
| Tags: | His tag |
| Molecular Weight: | 13.1 kDa |
| Purity: | Greater than 95% by SDS-PAGE gel analyses |
| Formulation: | Lyophilized from a 0.2um filtered solution in PBS with 5% trehalose, pH7.4 |
| Reconstitution: | Sterile distilled water |
| Storage: | -20°C for 12 months as lyophilized; 2-8°C for 1 month under sterile conditions after reconstitution |

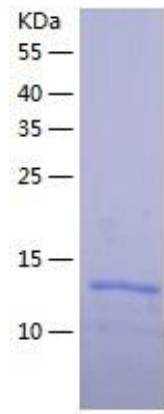
Wuhan Fine Biotech Co., Ltd.

B9 Bld, High-Tech Medical Devices Park, No. 818 Gaoxin Ave. East Lake High-Tech Development Zone. Wuhan, Hubei, China (430206)

Tel: (0086)027-87384275

Fax: (0086)027-87800889

www.fn-test.com

Image:**Safety note:**

This product is intended for research and manufacturing uses only. It is not a diagnostic device. Product degradation will result from multiple freeze/thaw cycles. It is suggested that the antigen be stored in use size aliquots and thawed just prior to use. This material has been inactivated, however as with all biological materials, it should be handled as potentially infectious. The user assumes all responsibility for care, custody and control of the material, including its disposal, in accordance with all regulations.

Wuhan Fine Biotech Co., Ltd.

B9 Bld, High-Tech Medical Devices Park, No. 818 Gaoxin Ave. East Lake High-Tech Development Zone. Wuhan, Hubei, China (430206)

Tel: (0086)027-87384275

Fax: (0086)027-87800889

www.fn-test.com