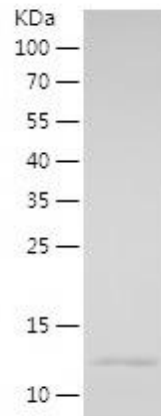


## Recombinant Human EVI2A

|                           |   |
|---------------------------|---|
| <b>Catalogue No.:</b>     | P1356   |
| <b>Species:</b>           | Human   |
| <b>Uniprot ID:</b>        | P22794  |
| <b>Expression Region:</b> | 155-236   |
| <b>Host:</b>              | E.Coli  |
| <b>Tags:</b>              | N-terminal His Tag  |
| <b>Molecular Weight:</b>  | 10.9 kDa under reducing conditions  |
| <b>Purity:</b>            | Greater than 95% as determined by SDS-PAGE  |
| <b>Formulation:</b>       | Lyophilized from a 0.2 $\mu$ m filtered solution in 10 mM Hepes, 500 mM NaCl with 5% trehalose, pH7.4   |
| <b>Reconstitution:</b>    | Centrifuge the vial prior to opening, reconstitute in sterile distilled water or buffer of interest to a concentration of 0.1-1mg/ml by gently pipetting 2-3 times, don't vortex.   |
| <b>Storage:</b>           | The lyophilized protein is stable at -20°C for up to 1 year, the protein solution can be stored at 2-8°C for up to 1 week. For extended storage, it is recommended to further dilute in a buffer containing 0.1% BSA (make sure BSA will NOT interfere with your experiment ) and store in working aliquots at -20°C to -80°C for 6 months. Avoid repeated freeze/thaw cycle. |

**Synonyms:** EVDA, EVI 2A, EVI2, EVI2A, Protein EVI2A

**SDS-PAGE:**



**Safety Note:**

This product is intended for research and manufacturing uses only. It is not a diagnostic device. Product degradation will result from multiple freeze/thaw cycles. It is suggested that the antigen be stored in use size aliquots and thawed just prior to use. This material has been inactivated, however as with all biological materials, it should be handled as potentially infectious. The user assumes all responsibility for care, custody and control of the material, including its disposal, in accordance with all regulations.