

## anti- mCherry antibody

### Product Information

Catalog No.:	FNab10967
Size:	100µg
Form:	liquid
Purification:	Protein A+G purification
Purity:	≥95% as determined by SDS-PAGE
Host:	Mouse
Clonality:	monoclonal
Clone ID:	9A5
IsoType:	IgG1
Storage:	PBS with 0.02% sodium azide and 50% glycerol pH 7.3, -20°C for 12 months (Avoid repeated freeze / thaw cycles.)

### Immunogen information

Immunogen:	monomeric cherry red fluorescent protein
Synonyms:	mCherry
Observed MW:	27 kDa
Uniprot ID :	None

### Application

Reactivity:	Recombinant protein
Tested Application:	WB
Recommended dilution:WB :	1:500-1:3000
Image:	

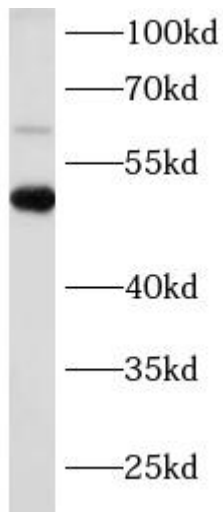
### Wuhan Fine Biotech Co., Ltd.

B9 Bld, High-Tech Medical Devices Park, No. 818 Gaoxin Ave. East Lake High-Tech Development Zone. Wuhan, Hubei, China(430206)

Tel : (0086)027-87384275

Fax: (0086)027-87800889

[www.fn-test.com](http://www.fn-test.com)



mCherry-tagged fusion protein were subjected to SDS PAGE followed by western blot with FNab10967(mCherry antibody) at dilution of 1:1000