

anti- Phospho-Tau(T181) antibody

Product Information

Catalog No.:	FNab10900
Size:	100µg
Form:	liquid
Purification:	Immunogen affinity purified
Purity:	≥95% as determined by SDS-PAGE
Host:	Rabbit
Clonality:	polyclonal
IsoType:	IgG
Storage:	PBS with 0.02% sodium azide and 50% glycerol pH 7.3, -20°C for 12 months (Avoid repeated freeze / thaw cycles.)

Immunogen information

Immunogen:	A phospho specific peptide corresponding to residues surrounding T181 of human tau
Synonyms:	DDPAC, FTDP-17, MAPTL, MSTD, MTBT1, MTBT2, PPND, PPP1R103, TAU, MAPT, Tau
Observed MW:	50 kDa
Uniprot ID :	P10636

Application

Reactivity:	Human, Mouse, Rat
Tested Application:	ELISA, WB
Recommended dilution:WB:	1:500-1:2000
Image:	

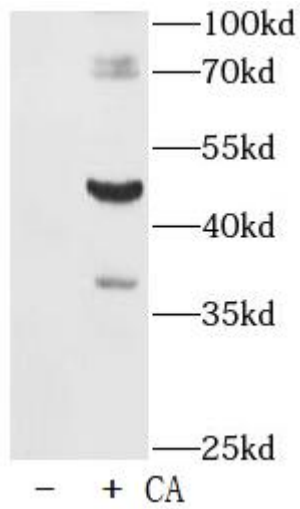
Wuhan Fine Biotech Co., Ltd.

B9 Bld, High-Tech Medical Devices Park, No. 818 Gaoxin Ave. East Lake High-Tech Development Zone. Wuhan, Hubei, China(430206)

Tel : (0086)027-87384275

Fax: (0086)027-87800889

www.fn-test.com



HeLa lysates were subjected to SDS PAGE followed by western blot with Phospho-Tau-T181 antibody at 1:1000. HeLa cells were treated by Calyculin A (100 nM) for 30 minutes after serum-starvation overnight.