

anti- LAMP1 antibody

Product Information

Catalog No.:	FNab10890
Size:	100µg
Form:	liquid
Purification:	Protein A+G purification
Purity:	≥95% as determined by SDS-PAGE
Host:	Mouse
Clonality:	monoclonal
Clone ID:	3C3
IsoType:	IgG2b
Storage:	PBS with 0.02% sodium azide and 50% glycerol pH 7.3, -20°C for 12 months (Avoid repeated freeze / thaw cycles.)

Immunogen information

Immunogen:	lysosomal-associated membrane protein 1
Synonyms:	CD107a, LAMPA, LGP120
Observed MW:	120 kDa
Uniprot ID :	P11279

Application

Reactivity:	Human
Tested Application:	ELISA, WB, IHC, IF
Recommended dilution:	WB: 1:1000 - 1:10000; IHC: 1:50 - 1:200; IF: 1:50 - 1:200
Image:	

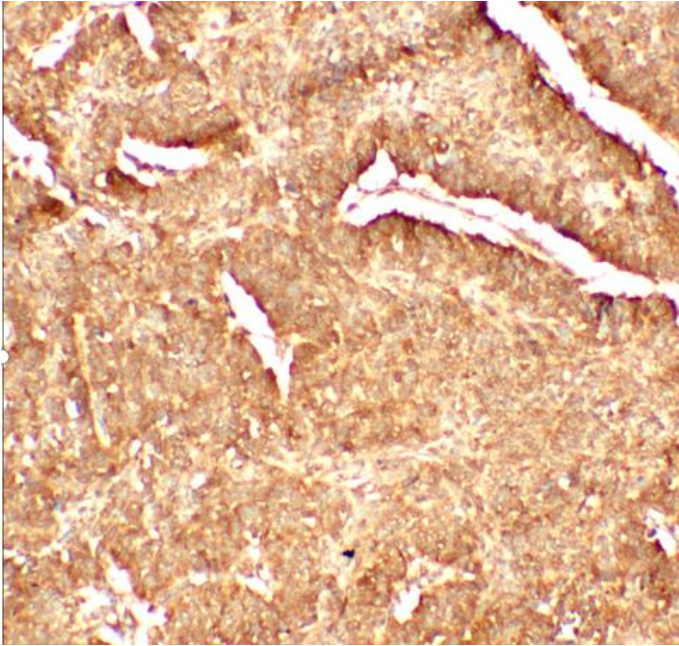
Wuhan Fine Biotech Co., Ltd.

B9 Bld, High-Tech Medical Devices Park, No. 818 Gaoxin Ave. East Lake High-Tech Development Zone. Wuhan, Hubei, China(430206)

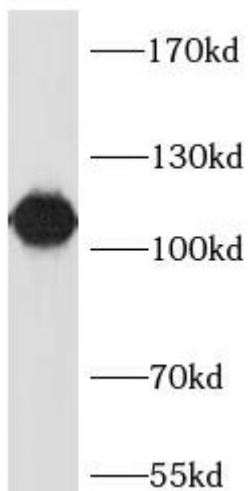
Tel : (0086)027-87384275

Fax: (0086)027-87800889

www.fn-test.com



Immunohistochemistry of paraffin-embedded human liver cancer tissue slide using FNab10890(LAMP1 Antibody) at dilution of 1:100



K562 cells were subjected to SDS PAGE followed by western blot with FNab10890(LAMP1 Antibody) at dilution of 1:5000