

anti- RFP antibody

Product Information

Catalog No.:	FNab10888
Size:	100µg
Form:	liquid
Purification:	Protein A+G purification
Purity:	≥95% as determined by SDS-PAGE
Host:	Mouse
Clonality:	monoclonal
Clone ID:	8H2
IsoType:	IgG2b
Storage:	PBS with 0.02% sodium azide and 50% glycerol pH 7.3, -20°C for 12 months (Avoid repeated freeze / thaw cycles.)

Background

Fluorescent proteins have become a useful and ubiquitous tool for making chimeric proteins. Red fluorescent protein from *Entacmaea quadricolor*. Abs(max)=559 nm; Exhibits a smaller absorbance peak at 525 nm. It has a strong fluorescence emission spectrum which peaks at 611 nm. This antibody can be used to detect the RFP tagged protein.

Immunogen information

Immunogen:	Red fluorescent protein
Synonyms:	GFP-like chromoprotein, Red fluorescent protein eqFP611, RFP, RFP tag
Uniprot ID :	Q8ISF8

Application

Reactivity:	RFP tagged protein
Tested Application:	WB
Recommended dilution:WB:	1:1000-1:5000
Image:	

1

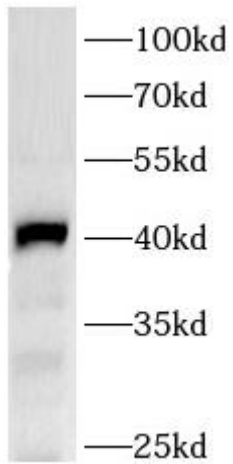
Wuhan Fine Biotech Co., Ltd.

B9 Bld, High-Tech Medical Devices Park, No. 818 Gaoxin Ave. East Lake High-Tech Development Zone. Wuhan, Hubei, China(430206)

Tel : (0086)027-87384275

Fax: (0086)027-87800889

www.fn-test.com



RFP tagged protein were subjected to SDS PAGE followed by western blot with FNab10888(RFP Antibody) at dilution of 1:3000