

anti- WFDC12 antibody

Product Information

Catalog No.:	FNab10885
Size:	100µg
Form:	liquid
Purification:	Immunogen affinity purified
Purity:	≥95% as determined by SDS-PAGE
Host:	Rabbit
Clonality:	polyclonal
IsoType:	IgG
Storage:	PBS with 0.02% sodium azide and 50% glycerol pH 7.3, -20°C for 12 months (Avoid repeated freeze / thaw cycles.)

Immunogen information

Immunogen:	WAP four-disulfide core domain protein 12
Synonyms:	C20orf122, SWAM2, WAP2, WFDC12, Whey acidic protein 2
Uniprot ID :	Q8WWY7

Application

Reactivity:	Human
Tested Application:	ELISA, IHC
Recommended dilution:	IHC: 1:50 - 1:500
Image:	

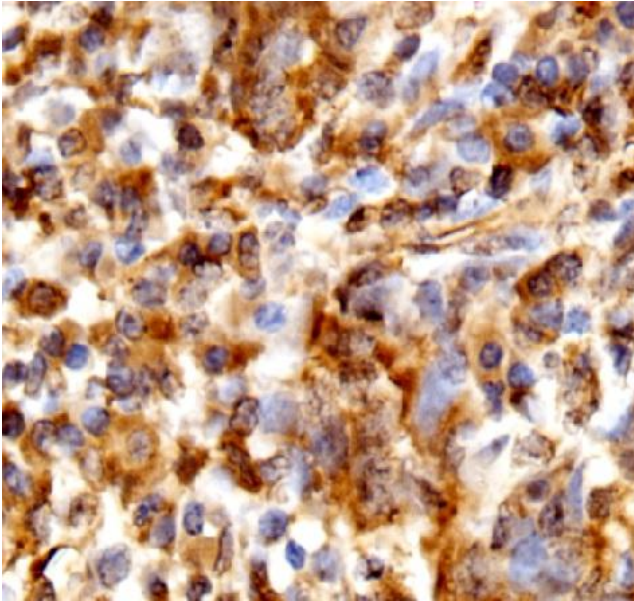
Wuhan Fine Biotech Co., Ltd.

B9 Bld, High-Tech Medical Devices Park, No. 818 Gaoxin Ave. East Lake High-Tech Development Zone. Wuhan, Hubei, China(430206)

Tel : (0086)027-87384275

Fax: (0086)027-87800889

www.fn-test.com



Immunohistochemistry of paraffin-embedded human lung cancer tissue using FNab10885(WFDC12 antibody) at dilution of 1:100