

## anti- SLC34A2 antibody

### Product Information

Catalog No.:	FNab10783
Size:	100µg
Form:	liquid
Purification:	Immunogen affinity purified
Purity:	≥95% as determined by SDS-PAGE
Host:	Rabbit
Clonality:	polyclonal
IsoType:	IgG
Storage:	PBS with 0.02% sodium azide and 50% glycerol pH 7.3, -20°C for 12 months (Avoid repeated freeze / thaw cycles.)

### Background

May be involved in actively transporting phosphate into cells via Na(+) cotransport. It may be the main phosphate transport protein in the intestinal brush border membrane. May have a role in the synthesis of surfactant in lungs' alveoli.

### Immunogen information

Immunogen:	solute carrier family 34(sodium phosphate), member 2
Synonyms:	Na(+)/Pi cotransporter 2B, NaPi 2b, NAPI 3B, NAPI IIb, NaPi3b, SLC34A2
Observed MW:	None
Uniprot ID :	O95436

### Application

Reactivity:	Human
Tested Application:	ELISA, IHC
Recommended dilution:IHC:	1:20-1:200
Image:	

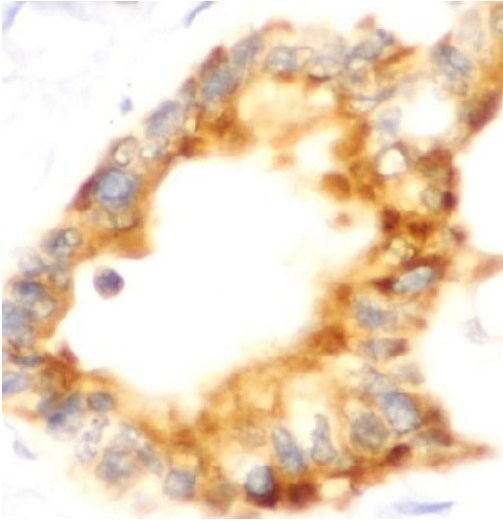
### Wuhan Fine Biotech Co., Ltd.

B9 Bld, High-Tech Medical Devices Park, No. 818 Gaoxin Ave. East Lake High-Tech Development Zone. Wuhan, Hubei, China(430206)

Tel : (0086)027-87384275

Fax: (0086)027-87800889

[www.fn-test.com](http://www.fn-test.com)



Immunohistochemistry of paraffin-embedded human pancreas tissue slide using FNab10783(SLC34A2 Antibody) at dilution of 1:100