

anti- KRT6B antibody

Product Information

Catalog No.:	FNab10781
Size:	100µg
Form:	liquid
Purification:	Immunogen affinity purified
Purity:	≥95% as determined by SDS-PAGE
Host:	Rabbit
Clonality:	polyclonal
IsoType:	IgG
Storage:	PBS with 0.02% sodium azide and 50% glycerol pH 7.3, -20°C for 12 months (Avoid repeated freeze / thaw cycles.)

Background

The protein encoded by this gene is a member of the keratin gene family. The type II cytokeratins consist of basic or neutral proteins which are arranged in pairs of heterotypic keratin chains coexpressed during differentiation of simple and stratified epithelial tissues. As many as six of this type II cytokeratin (KRT6) have been identified; the multiplicity of the genes is attributed to successive gene duplication events. The genes are expressed with family members KRT16 and/or KRT17 in the filiform papillae of the tongue, the stratified epithelial lining of oral mucosa and esophagus, the outer root sheath of hair follicles, and the glandular epithelia. Mutations in these genes have been associated with pachyonychia congenita.

Immunogen information

Immunogen:	keratin 6B
Synonyms:	CK 6B, CK6B, Cytokeratin 6B, K6B, keratin 6B, KRT6B, KRTL1, PC2, Type II keratin Kb10
Observed MW:	None
Uniprot ID :	P04259

Application

Reactivity:	Human
-------------	-------

Wuhan Fine Biotech Co., Ltd.

B9 Bld, High-Tech Medical Devices Park, No. 818 Gaoxin Ave. East Lake High-Tech Development Zone. Wuhan, Hubei, China(430206)

Tel : (0086)027-87384275

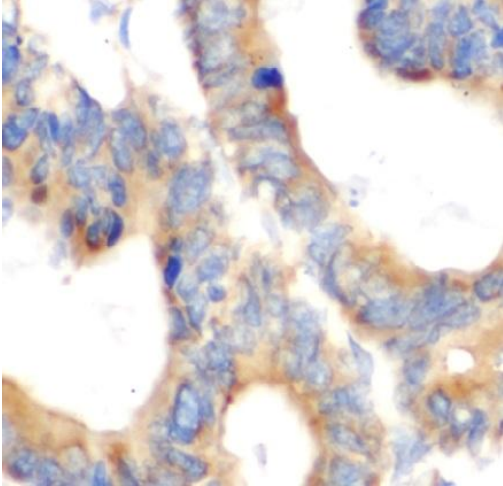
Fax: (0086)027-87800889

www.fn-test.com

Tested Application: ELISA, IHC

Recommended dilution:IHC: 1:20-1:200

Image:



Immunohistochemistry of paraffin-embedded human colon cancer tissue slide using FNab10781(KRT6B Antibody) at dilution of 1:100