

anti- Galc antibody

Product Information

| | |
|---------------|-----------------------------------------------------------------------------------------------------------------|
| Catalog No.: | FNab10708 |
| Size: | 100µg |
| Form: | liquid |
| Purification: | Immunogen affinity purified |
| Purity: | ≥95% as determined by SDS-PAGE |
| Host: | Rabbit |
| Clonality: | polyclonal |
| IsoType: | IgG |
| Storage: | PBS with 0.02% sodium azide and 50% glycerol pH 7.3, -20°C for 12 months (Avoid repeated freeze / thaw cycles.) |

Background

This gene encodes a lysosomal protein which hydrolyzes the galactose ester bonds of galactosylceramide, galactosylsphingosine, lactosylceramide, and monogalactosyldiglyceride. Mutations in this gene have been associated with Krabbe disease, also known as globoid cell leukodystrophy. Alternate transcriptional splice variants, encoding different isoforms, have been characterized.

Immunogen information

| | |
|--------------|-------------------------------------------------|
| Immunogen: | galactosylceramidase |
| Synonyms: | Gacy, galactosylceramidase, Galc, twi, twitcher |
| Observed MW: | 80 kDa, 50 kDa, 30 kDa |
| Uniprot ID : | P54803 |

Application

| | |
|-----------------------|---------------------------------------|
| Reactivity: | Human, Mouse, Rat |
| Tested Application: | ELISA, WB, IHC |
| Recommended dilution: | WB: 1:500 - 1:2000; IHC: 1:50 - 1:100 |
| Image: | |

1

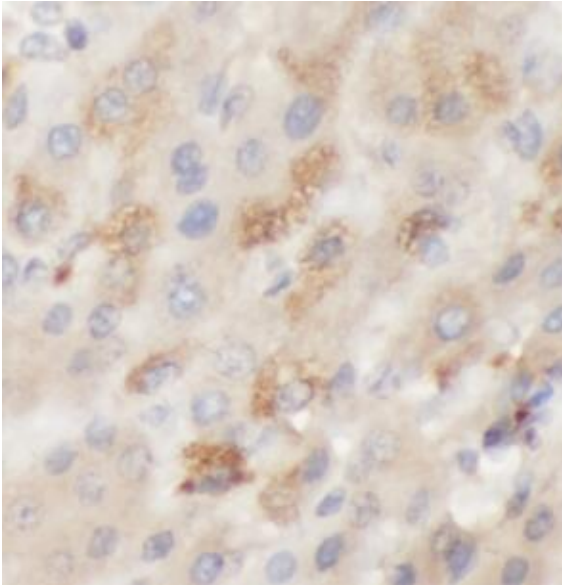
Wuhan Fine Biotech Co., Ltd.

B9 Bld, High-Tech Medical Devices Park, No. 818 Gaoxin Ave. East Lake High-Tech Development Zone. Wuhan, Hubei, China(430206)

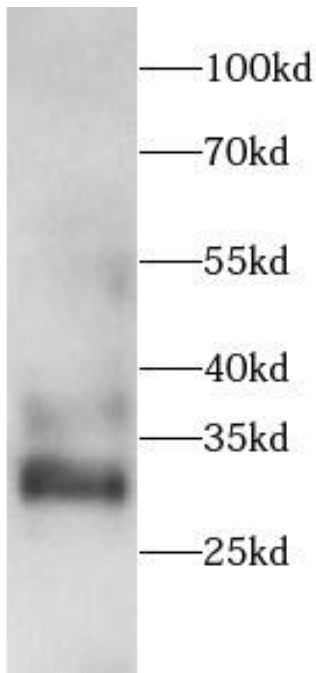
Tel : (0086)027-87384275

Fax: (0086)027-87800889

www.fn-test.com



Immunohistochemistry of paraffin-embedded human liver tissue slide using FNab10708(Galc antibody) at dilution of 1:100



Rat testis tissue were subjected to SDS PAGE followed by western blot with FNab10708(Galc antibody) at dilution of 1:1000