
anti- TOMM20 antibody

Product Information

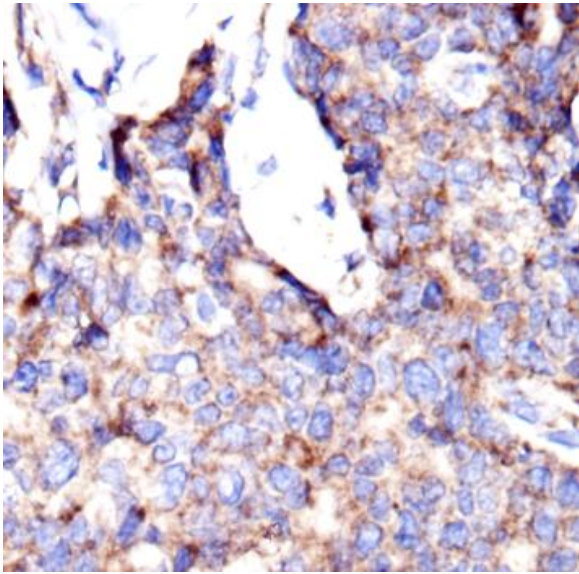
Catalog No.:	FNab10633
Size:	100µg
Form:	liquid
Purification:	Protein A+G purification
Purity:	≥95% as determined by SDS-PAGE
Host:	Mouse
Clonality:	monoclonal
Clone ID:	9H6
IsoType:	IgG2b
Storage:	PBS with 0.02% sodium azide and 50% glycerol pH 7.3, -20°C for 12 months (Avoid repeated freeze / thaw cycles.)

Immunogen information

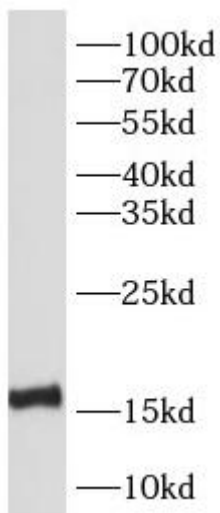
Immunogen:	translocase of outer mitochondrial membrane 20 homolog
Synonyms:	Cell and organelle markers, KIAA0016, MAS20, Mitochondria Marker, Mitochondrial Marker, Mitochondrion Marker, MOM19, TOM20, TOMM20
Observed MW:	16 kDa
Uniprot ID :	Q15388

Application

Reactivity:	Human
Tested Application:	ELISA, WB, IHC, IF
Recommended dilution:	WB: 1:1000 - 1:10000; IHC: 1:200 - 1:1000; IF: 1:50 - 1:200
Image:	



Immunohistochemistry of paraffin-embedded human breast cancer tissue slide using FNab10633(TOMM20 Antibody) at dilution of 1:500



HeLa cells were subjected to SDS PAGE followed by western blot with FNab10633(TOMM20 Antibody) at dilution of 1:5000