

anti-L-Selectin antibody

Product Information

Catalog No.:	FNab10510
Size:	100µg
Form:	liquid
Purification:	Immunogen affinity purified
Purity:	≥95% as determined by SDS-PAGE
Host:	Rabbit
Clonality:	polyclonal
IsoType:	IgG
Storage:	PBS with 0.02% sodium azide and 50% glycerol pH 7.3, -20°C for 12 months (Avoid repeated freeze / thaw cycles.)

Background

This gene encodes a cell surface adhesion molecule that belongs to a family of adhesion/homing receptors. The encoded protein contains a C-type lectin-like domain, a calcium-binding epidermal growth factor-like domain, and two short complement-like repeats. The gene product is required for binding and subsequent rolling of leucocytes on endothelial cells, facilitating their migration into secondary lymphoid organs and inflammation sites. Single-nucleotide polymorphisms in this gene have been associated with various diseases including immunoglobulin A nephropathy. Alternatively spliced transcript variants have been found for this gene.

Immunogen information

Immunogen:	L-selectin
Synonyms:	SELL, CD62L, LAM1, LECAM1, LEU8, LNHR
Observed MW:	74 kDa
Uniprot ID :	P14151

Application

Wuhan Fine Biotech Co., Ltd.

B9 Bld, High-Tech Medical Devices Park, No. 818 Gaoxin Ave. East Lake High-Tech Development Zone. Wuhan, Hubei, China(430206)

Tel : (0086)027-87384275

Fax: (0086)027-87800889

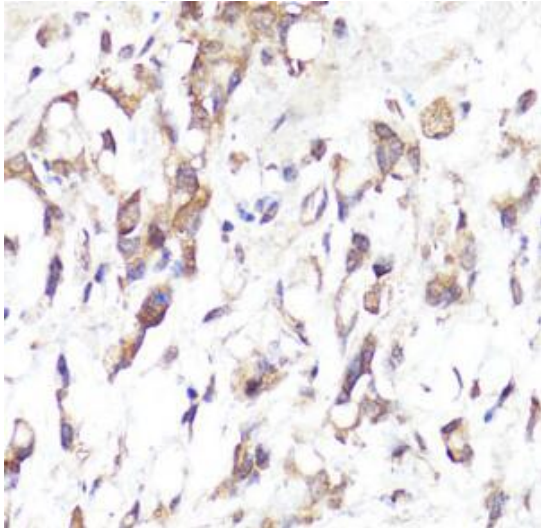
www.fn-test.com

Reactivity: Human, Mouse, Rat

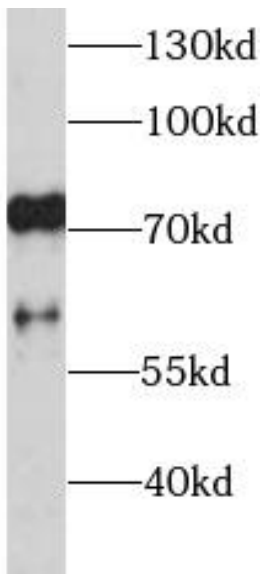
Tested Application: ELISA, WB, IHC, IF

Recommended dilution: WB: 1:500-1:2000; IHC: 1:50-1:200; IF: 1:50-1:200

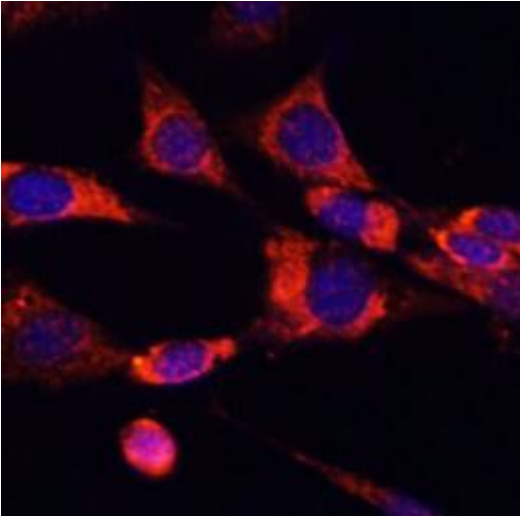
Image:



Immunohistochemistry of paraffin-embedded human gastric cancer slide using FNab10510(L-Selectin antibody) at dilution of 1:50



Raji cells were subjected to SDS PAGE followed by western blot with FNab10510(L-Selectin antibody) at dilution of 1:1000



Immunofluorescent analysis of NIH/3T3 cells using FNab10510(L-Selectin antibody) at dilution of 1:50.