

anti-CHAF1b antibody

Product Information

Catalog No.:	FNab10505
Size:	100µg
Form:	liquid
Purification:	Immunogen affinity purified
Purity:	≥95% as determined by SDS-PAGE
Host:	Rabbit
Clonality:	polyclonal
IsoType:	IgG
Storage:	PBS with 0.02% sodium azide and 50% glycerol pH 7.3, -20°C for 12 months (Avoid repeated freeze / thaw cycles.)

Background

Chromatin assembly factor I (CAF-I) is required for the assembly of histone octamers onto newly-replicated DNA. CAF-I is composed of three protein subunits, p50, p60, and p150. The protein encoded by this gene corresponds to the p60 subunit and is required for chromatin assembly after replication. The encoded protein is differentially phosphorylated in a cell cycle-dependent manner. In addition, it is normally found in the nucleus except during mitosis, when it is released into the cytoplasm. This protein is a member of the WD-repeat HIR1 family and may also be involved in DNA repair.

Immunogen information

Immunogen:	Chromatin assembly factor 1 subunit B
Synonyms:	CHAF1B, CAF-1, CAF-IP60, CAF1
Observed MW:	70 kDa
Uniprot ID :	Q13112

Application

Reactivity:	Human, Mouse, Rat
-------------	-------------------

Wuhan Fine Biotech Co., Ltd.

B9 Bld, High-Tech Medical Devices Park, No. 818 Gaoxin Ave. East Lake High-Tech Development Zone. Wuhan, Hubei, China(430206)

Tel : (0086)027-87384275

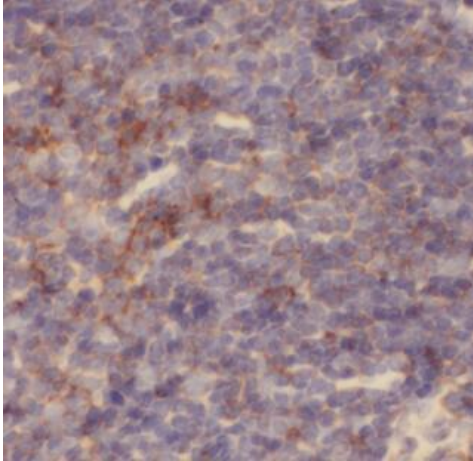
Fax: (0086)027-87800889

www.fn-test.com

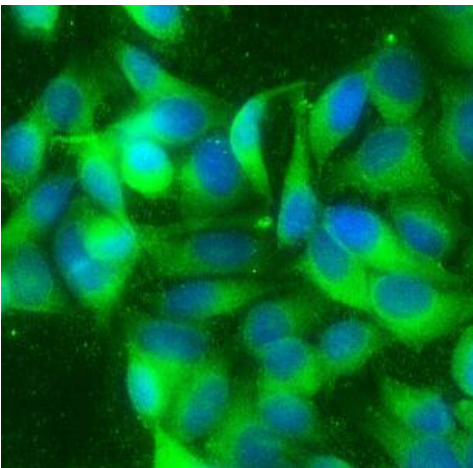
Tested Application: ELISA, WB, IHC, IF

Recommended dilution: WB: 1:500-1:2000; IHC: 1:50-1:200; IF: 1:50-1:200

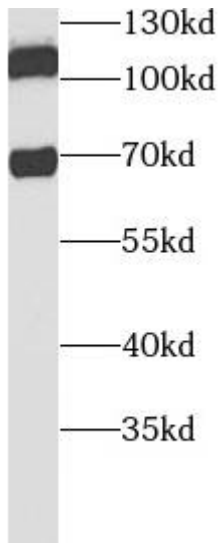
Image:



Immunohistochemistry of paraffin-embedded mouse spleen slide using FNab10505(CHAF1b antibody) at dilution of 1:50



Immunofluorescent analysis of MCF-7 cells using FNab10505(CHAF1b antibody) at dilution of 1:50.



MCF7 cells were subjected to SDS PAGE followed by western blot with FNab10505(CHAF1b antibody) at dilution of 1:1000