

anti- Phospho-Camk2a(T286) antibody

Product Information

Catalog No.:	FNab10481
Size:	100µg
Form:	liquid
Purification:	Immunogen affinity purified
Purity:	≥95% as determined by SDS-PAGE
Host:	Rabbit
Clonality:	polyclonal
IsoType:	IgG
Storage:	PBS with 0.02% sodium azide and 50% glycerol pH 7.3, -20°C for 12 months (Avoid repeated freeze / thaw cycles.)

Background

The product of this gene belongs to the serine/threonine protein kinases family, and to the Ca(2+)/calmodulin-dependent protein kinases subfamily. Calcium signaling is crucial for several aspects of plasticity at glutamatergic synapses. This calcium calmodulin-dependent protein kinase is composed of four different chains: alpha, beta, gamma, and delta. The alpha chain encoded by this gene is required for hippocampal long-term potentiation (LTP) and spatial learning. In addition to its calcium-calmodulin (CaM)-dependent activity, this protein can undergo autophosphorylation, resulting in CaM-independent activity. Two transcript variants encoding distinct isoforms have been identified for this gene.

Immunogen information

Immunogen:	calcium/calmodulin-dependent protein kinase II alpha
Synonyms:	CaM kinase II subunit alpha, CaMK II subunit alpha, CAMK2, CAMK2A, CAMK2B, CAMK2D, CAMK2G, CAMKA, CaMKII alpha, KIAA0968
Observed MW:	54 kDa
Uniprot ID :	Q9UQM7

Application

Reactivity:	Human, Mouse, Rat
-------------	-------------------

Wuhan Fine Biotech Co., Ltd.

B9 Bld, High-Tech Medical Devices Park, No. 818 Gaoxin Ave. East Lake High-Tech Development Zone. Wuhan, Hubei, China(430206)

Tel : (0086)027-87384275

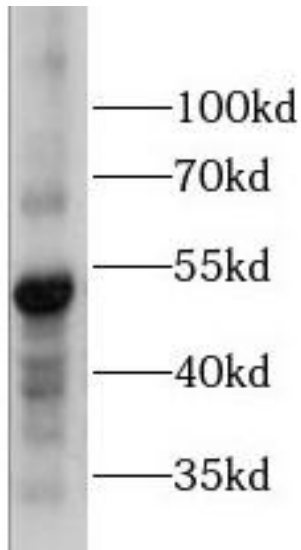
Fax: (0086)027-87800889

www.fn-test.com

Tested Application: ELISA, WB

Recommended dilution: WB: 1:500-1:2000

Image:



mouse brain tissue were subjected to SDS PAGE followed by western blot with FNab10481(Phospho-Camk2a-T286 antibody) at dilution of 1:1000