

anti- KS6A1 antibody

Product Information

Catalog No.:	FNab10188
Size:	100µg
Form:	liquid
Purification:	Immunogen affinity purified
Purity:	≥95% as determined by SDS-PAGE
Host:	Rabbit
Clonality:	polyclonal
Clone ID:	None
IsoType:	IgG
Storage:	PBS with 0.02% sodium azide and 50% glycerol pH 7.3, -20°C for 12 months (Avoid repeated freeze / thaw cycles.)

Background

None

Immunogen information

Immunogen:	Ribosomal protein S6 kinase alpha-1
Synonyms:	MAPKAPK1A, RSK1
Observed MW:	72-90 kDa
Uniprot ID :	Q15418

Application

Reactivity:	Human
Tested Application:	ELISA, WB, IHC
Recommended dilution:	WB: 1:200-1:2000; IHC: 1:50-1:200
Image:	

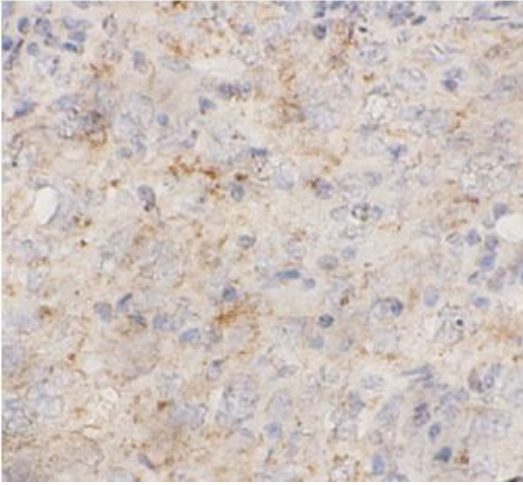
Wuhan Fine Biotech Co., Ltd.

B9 Bld, High-Tech Medical Devices Park, No. 818 Gaoxin Ave. East Lake High-Tech Development Zone. Wuhan, Hubei, China(430206)

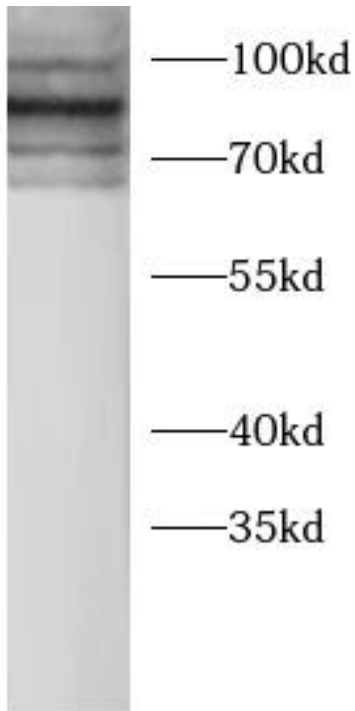
Tel : (0086)027-87384275

Fax: (0086)027-87800889

www.fn-test.com



Immunohistochemistry of paraffin-embedded human breast cancer tissue slide using FNab10188(KS6A1 antibody) at dilution of 1:200



Hela cells were subjected to SDS PAGE followed by western blot with FNab10188(KS6A1 antibody) at dilution of 1:1000