

anti- EGFR antibody

Product Information

Catalog No.:	FNab10146
Size:	100µg
Form:	liquid
Purification:	protein A+G purified
Purity:	≥95% as determined by SDS-PAGE
Host:	Mouse
Clonality:	monoclonal
Clone ID:	2C9
IsoType:	IgG1
Storage:	PBS with 0.02% sodium azide and 50% glycerol pH 7.3, -20°C for 12 months (Avoid repeated freeze / thaw cycles.)

Background

The protein encoded by this gene is a transmembrane glycoprotein that is a member of the protein kinase superfamily. This protein is a receptor for members of the epidermal growth factor family. EGFR is a cell surface protein that binds to epidermal growth factor. Binding of the protein to a ligand induces receptor dimerization and tyrosine autophosphorylation and leads to cell proliferation. Mutations in this gene are associated with lung cancer.

Immunogen information

Immunogen:	epidermal growth factor receptor
Synonyms:	EGFR, ERBB, ERBB1, HER1, mENA, PIG61, Proto oncogene c ErbB 1
Observed MW:	140-160 kDa
Uniprot ID :	P00533

Application

Reactivity:	Human
Tested Application:	ELISA, WB, IHC
Recommended dilution:	WB: 1:2000 - 1:10000; IHC: 1:100 - 1:1000

Wuhan Fine Biotech Co., Ltd.

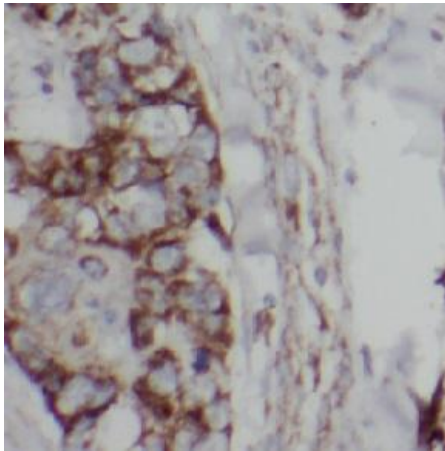
B9 Bld, High-Tech Medical Devices Park, No. 818 Gaoxin Ave. East Lake High-Tech Development Zone. Wuhan, Hubei, China(430206)

Tel : (0086)027-87384275

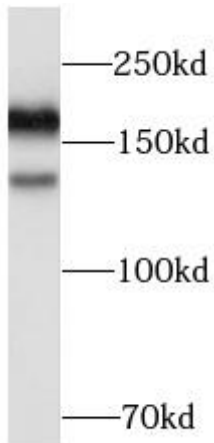
Fax: (0086)027-87800889

www.fn-test.com

Image:



Immunohistochemistry of paraffin-embedded human lung cancer slide using FNab10146(EGFR Antibody) at dilution of 1:500



PC-3 cells were subjected to SDS PAGE followed by western blot with FNab10146(EGFR Antibody) at dilution of 1:5000

Wuhan Fine Biotech Co., Ltd.

B9 Bld, High-Tech Medical Devices Park, No. 818 Gaoxin Ave. East Lake High-Tech Development Zone. Wuhan, Hubei, China(430206)

Tel : (0086)027-87384275

Fax: (0086)027-87800889

www.fn-test.com