

anti- EML4 antibody

Product Information

Catalog No.:	FNab10047
Size:	100µg
Form:	liquid
Purification:	Immunogen affinity purified
Purity:	≥95% as determined by SDS-PAGE
Host:	Rabbit
Clonality:	polyclonal
Clone ID:	None
IsoType:	IgG
Storage:	PBS with 0.02% sodium azide and 50% glycerol pH 7.3, -20°C for 12 months (Avoid repeated freeze / thaw cycles.)

Background

May modify the assembly dynamics of microtubules, such that microtubules are slightly longer, but more dynamic.

Immunogen information

Immunogen:	echinoderm microtubule associated protein like 4
Synonyms:	C2orf2, ELP120, EMAP 4, EMAPL4, EML4, Ropp 120, ROPP120
Observed MW:	120 kDa
Uniprot ID :	Q9HC35

Application

Reactivity:	Human, Rat, Mouse
Tested Application:	ELISA, WB, IHC
Recommended dilution:	WB: 1:500-1:2000; IHC: 1:50-1:500
Image:	

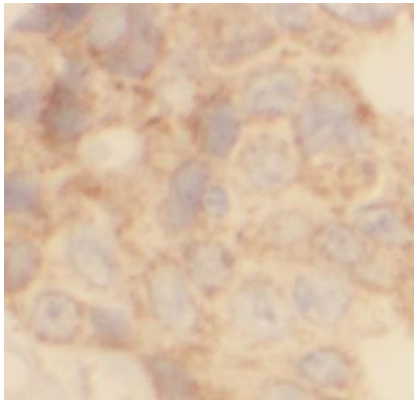
Wuhan Fine Biotech Co., Ltd.

B9 Bld, High-Tech Medical Devices Park, No. 818 Gaoxin Ave. East Lake High-Tech Development Zone. Wuhan, Hubei, China(430206)

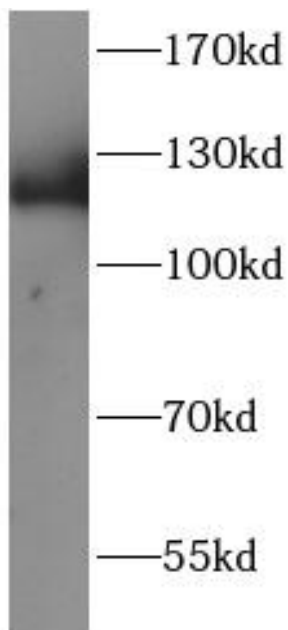
Tel : (0086)027-87384275

Fax: (0086)027-87800889

www.fn-test.com



Immunohistochemistry of paraffin-embedded human breast cancer tissue slide using FNab10047(EML4 Antibody) at dilution of 1:200



A549 cells were subjected to SDS PAGE followed by western blot with FNab10047(EML4 antibody) at dilution of 1:1000