

anti- Phospho- CREB1(S133) antibody

Product Information

Catalog No.:	FNab09948
Size:	100µg
Form:	liquid
Purification:	Immunogen affinity purified
Purity:	≥95% as determined by SDS-PAGE
Host:	Rabbit
Clonality:	polyclonal
Clone ID:	None
IsoType:	IgG
Storage:	PBS with 0.02% sodium azide and 50% glycerol pH 7.3, -20°C for 12 months (Avoid repeated freeze / thaw cycles.)

Background

This gene encodes a transcription factor that is a member of the leucine zipper family of DNA binding proteins. This protein binds as a homodimer to the cAMP-responsive element, an octameric palindrome. The protein is phosphorylated by several protein kinases, and induces transcription of genes in response to hormonal stimulation of the cAMP pathway. Alternate splicing of this gene results in several transcript variants encoding different isoforms.

Immunogen information

Immunogen:	Phospho-CREB1-S133
Synonyms:	CREB, CREB-1
Observed MW:	42kDa
Uniprot ID :	P16220

Application

Reactivity:	Human
Tested Application:	ELISA, WB, IF
Recommended dilution:	WB: 1:500 - 1:2000; IF: 1:50 - 1:200

Wuhan Fine Biotech Co., Ltd.

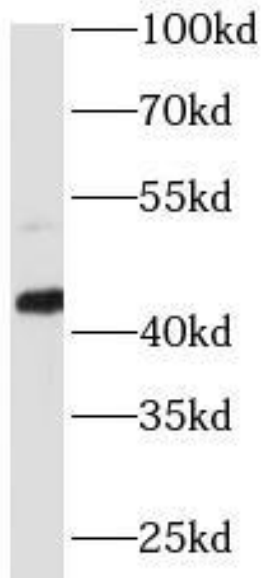
B9 Bld, High-Tech Medical Devices Park, No. 818 Gaoxin Ave. East Lake High-Tech Development Zone. Wuhan, Hubei, China(430206)

Tel : (0086)027-87384275

Fax: (0086)027-87800889

www.fn-test.com

Image:



293T cells were subjected to SDS PAGE followed by western blot with FNab09948(Phospho-CREB1(S133) antibody) at dilution of 1:1000. 293T cells were treated by 10% FBS at 37°C for 30 minutes after serum-starvation overnight.