

## anti- Cytochrome c antibody

### Product Information

Catalog No.:	FNab098271
Size:	100µg
Form:	liquid
Purification:	Protein A+G purification
Purity:	≥95% as determined by SDS-PAGE
Host:	Mouse
Clonality:	monoclonal
Clone ID:	3G4
IsoType:	IgG2a
Storage:	PBS with 0.02% sodium azide and 50% glycerol pH 7.3, -20°C for 12 months (Avoid repeated freeze / thaw cycles.)

### Background

Cytochrome c is a 12-15 kDa electron transporting protein located in the inner mitochondrial membrane. Upon apoptotic stimulation, cytochrome c can be released from mitochondria into cytoplasm, resulting in caspase-3 activation and apoptosis. Measurement of cytochrome c release from the mitochondria is useful for detection of the onset of apoptosis in cells. In addition, cytochrome c can also leave cells and be detectable in extra-cellular medium of apoptotic cells and serum of cancer patients. The level of serum cytochrome c may serve as a prognostic maker during cancer therapy.

### Immunogen information

Immunogen:	Cytochrome c
Synonyms:	CYC, CYCS, Cytochrome c, cytochrome c, somatic, HCS, THC4
Observed MW:	12 kDa
Uniprot ID :	P99999

### Application

Reactivity:	Human, Mouse, Rat
-------------	-------------------

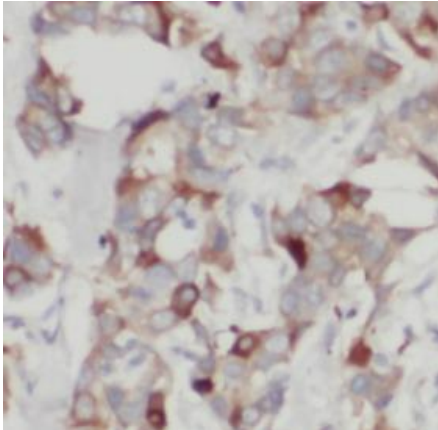
### Wuhan Fine Biotech Co., Ltd.

B9 Bld, High-Tech Medical Devices Park, No. 818 Gaoxin Ave. East Lake High-Tech Development Zone. Wuhan, Hubei, China(430206)

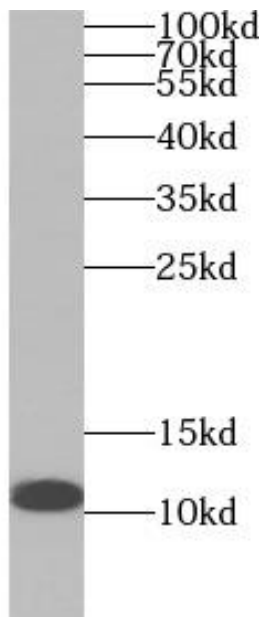
Tested Application: ELISA, WB, IHC

Recommended dilution: WB: 1:5000-1:30000; IHC: 1:100-1:1000

Image:



Immunohistochemistry of paraffin-embedded human breast cancer tissue slide using FNab098271( Cytochrome c Antibody) at dilution of 1:600



Hela cells were subjected to SDS PAGE followed by western blot with FNab098271(Cytochrome c antibody) at dilution of 1:20000

**Wuhan Fine Biotech Co., Ltd.**

B9 Bld, High-Tech Medical Devices Park, No. 818 Gaoxin Ave. East Lake High-Tech Development Zone. Wuhan, Hubei, China(430206)

Tel : (0086)027-87384275

Fax: (0086)027-87800889

[www.fn-test.com](http://www.fn-test.com)