

## anti- P Glycoprotein antibody

### Product Information

Catalog No.:	FNab09805
Size:	100µg
Form:	liquid
Purification:	Immunogen affinity purified
Purity:	≥95% as determined by SDS-PAGE
Host:	Rabbit
Clonality:	polyclonal
Clone ID:	None
IsoType:	IgG
Storage:	PBS with 0.02% sodium azide and 50% glycerol pH 7.3, -20°C for 12 months (Avoid repeated freeze / thaw cycles.)

### Background

ABCB1(also known as P-gp/ P-glycoprotein, MDR1/multidrug-resistance 1) is a plasma membrane protein first discovered in multidrug resistant tumor cells. ABCB1 can extrude a large number of medically relevant compounds from cells and causes drug resistance. ABCB1 is expressed in a variety of human cancers as well as normal tissues including brain, and placenta. Overexpression of ABCB1 correlates with a negative prognosis in several types of cancer.

### Immunogen information

Immunogen:	ABCB1
Synonyms:	ABCB1, CD243, GP170, MDR1, Multidrug resistance protein 1, P glycoprotein 1
Observed MW:	142 kDa
Uniprot ID :	P08183

### Application

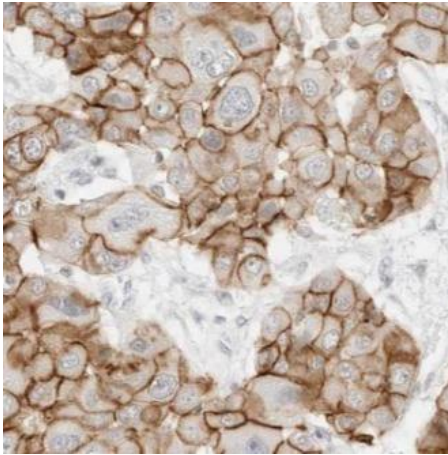
Reactivity:	Human, Mouse
Tested Application:	ELISA, WB, IP, IHC

### Wuhan Fine Biotech Co., Ltd.

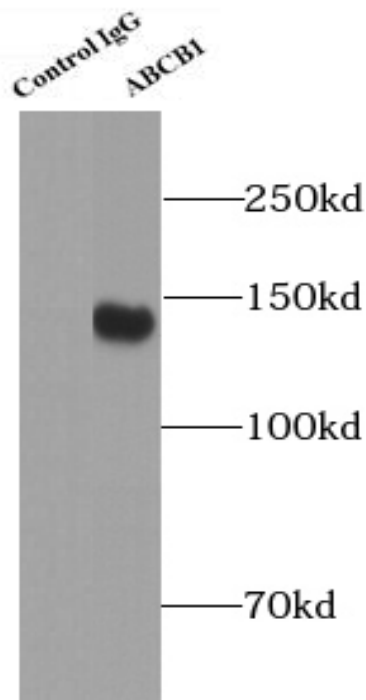
B9 Bld, High-Tech Medical Devices Park, No. 818 Gaoxin Ave. East Lake High-Tech Development Zone. Wuhan, Hubei, China(430206)

Recommended dilution: WB: 1:200-1:1000; IP: 1:200-1:1000; IHC: 1:50-1:500

Image:



Immunohistochemistry of paraffin-embedded human liver cancer tissue slide using FNab09805(P glycoprotein antibody) at dilution of 1:500



IP Result of anti-P glycoprotein (IP: FNab09805, 4ug; Detection: FNab09805 1:300) with human placenta tissue lysate 4000ug.

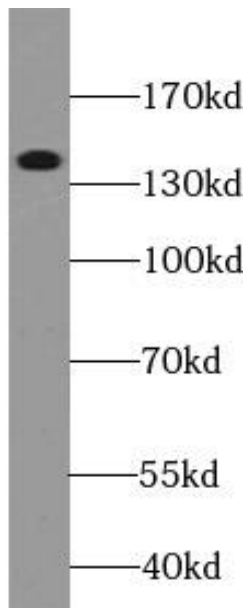
**Wuhan Fine Biotech Co., Ltd.**

B9 Bld, High-Tech Medical Devices Park, No. 818 Gaoxin Ave. East Lake High-Tech Development Zone. Wuhan, Hubei, China(430206)

Tel : (0086)027-87384275

Fax: (0086)027-87800889

[www.fn-test.com](http://www.fn-test.com)



unboiled HepG2 cells were subjected to SDS  
PAGE followed by western blot with  
FNab09805(P glycoprotein antibody) at dilution of  
1:300