

## anti- MIP-3 $\alpha$ antibody

### Product Information

Catalog No.:	FNab09791
Size:	100 $\mu$ g
Form:	liquid
Purification:	Immunogen affinity purified
Purity:	$\geq$ 95% as determined by SDS-PAGE
Host:	Rabbit
Clonality:	polyclonal
Clone ID:	None
IsoType:	IgG
Storage:	PBS with 0.02% sodium azide and 50% glycerol pH 7.3, -20°C for 12 months (Avoid repeated freeze / thaw cycles.)

### Background

CCL20, also known as macrophage infiltrating factor protein 3 $\alpha$ , is a C-C chemokine that specifically binds to the receptor CCR6. CCL20 is produced in various tissues and by a wide range of immune cells, including neutrophils, natural killer cells, T-helper type 17(Th17) cells, B cells, and various antigen-presenting cells, such as dendritic cells(DCs), Langerhans cells, and macrophages. Increased expression of CCL20 is likely involved in the increased recruitment of dendritic cells observed in fibroinflammatory diseases such as chronic obstructive pulmonary disease(COPD). CCL20 expression is increased by the proinflammatory cytokine IL-1 beta.

### Immunogen information

Immunogen:	chemokine(C-C motif) ligand 20
Synonyms:	Beta chemokine exodus 1, C C motif chemokine 20, CC chemokine LARC, CCL20, CKb4, LARC, MIP 3 alpha, MIP 3a, MIP3A, MIP-3 $\alpha$ , SCYA20, Small inducible cytokine A20, ST38
Observed MW:	None
Uniprot ID :	P78556

### Application

1

### Wuhan Fine Biotech Co., Ltd.

B9 Bld, High-Tech Medical Devices Park, No. 818 Gaoxin Ave. East Lake High-Tech Development Zone. Wuhan, Hubei, China(430206)

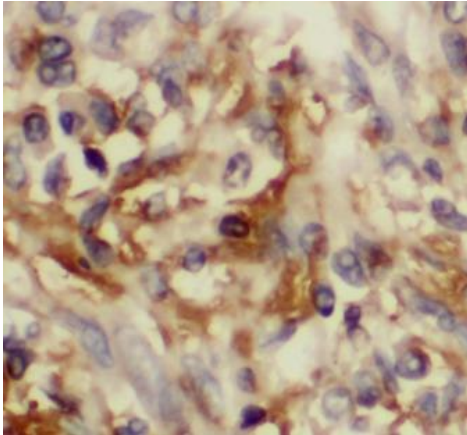
Tel : (0086)027-87384275

Fax: (0086)027-87800889

[www.fn-test.com](http://www.fn-test.com)

---

Reactivity: Human  
Tested Application: ELISA, IHC  
Recommended dilution: IHC: 1:50-1:500  
Image:



Immunohistochemistry of paraffin-embedded human lung cancer tissue slide using FNab09791(MIP-3 $\alpha$  Antibody) at dilution of 1:200