

anti- ZFYVE16 antibody

Product Information

Catalog No.:	FNab09628
Size:	100µg
Form:	liquid
Purification:	Immunogen affinity purified
Purity:	≥95% as determined by SDS-PAGE
Host:	Rabbit
Clonality:	polyclonal
Clone ID:	None
IsoType:	IgG
Storage:	PBS with 0.02% sodium azide and 50% glycerol pH 7.3, -20°C for 12 months (Avoid repeated freeze / thaw cycles.)

Background

May be involved in regulating membrane trafficking in the endosomal pathway. Overexpression induces endosome aggregation. Required to target TOM1 to endosomes.

Immunogen information

Immunogen:	zinc finger, FYVE domain containing 16
Synonyms:	DKFZp686E13162, ENDOFIN, KIAA0305, ZFYVE16
Observed MW:	169 kDa
Uniprot ID :	Q7Z3T8

Application

Reactivity:	Human, Mouse, Rat
Tested Application:	ELISA, WB, IP, IHC
Recommended dilution:	WB: 1:500-1:5000; IHC: 1:20-1:200; IP: 1:200-1:2000; IF: 1:20-1:200
Image:	

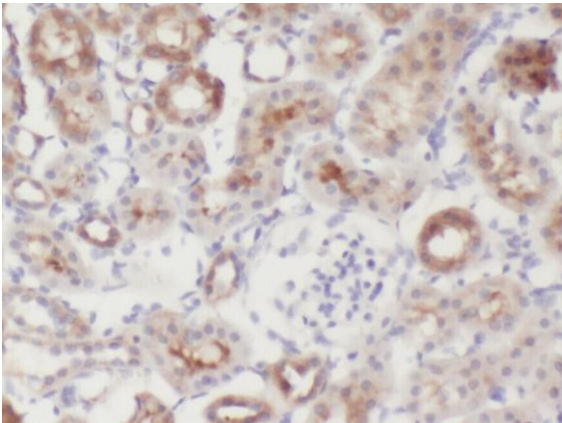
Wuhan Fine Biotech Co., Ltd.

B9 Bld, High-Tech Medical Devices Park, No. 818 Gaoxin Ave. East Lake High-Tech Development Zone. Wuhan, Hubei, China(430206)

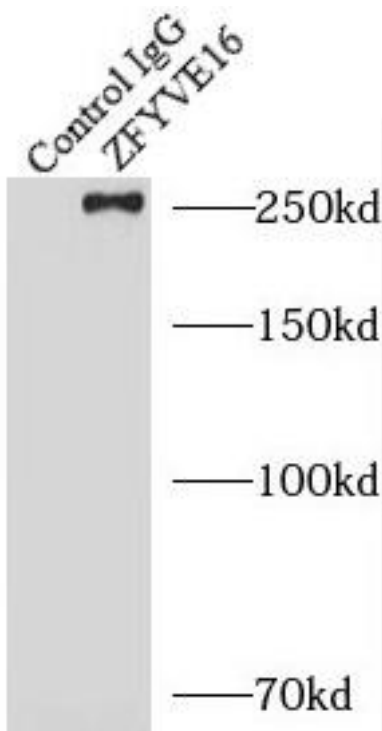
Tel : (0086)027-87384275

Fax: (0086)027-87800889

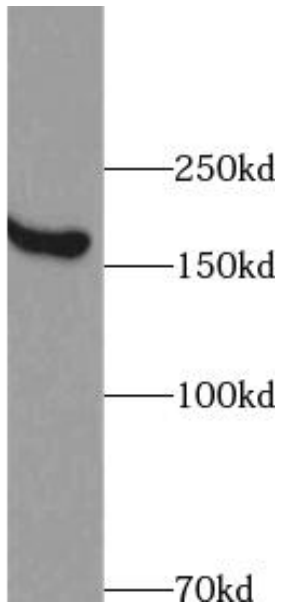
www.fn-test.com



Immunohistochemistry of paraffin-embedded human kidney using FNab09628(ZFYVE16 antibody) at dilution of 1:200



IP Result of anti-ZFYVE16 (IP:FNab09628, 5ug; Detection:FNab09628 1:500) with HeLa cells lysate 2000ug.



MDA-MB-453s cells were subjected to SDS PAGE followed by western blot with FNab09628(ZFYVE16 antibody) at dilution of 1:400