

## anti- YWHAH antibody

### Product Information

Catalog No.:	FNab09576
Size:	100µg
Form:	liquid
Purification:	Immunogen affinity purified
Purity:	≥95% as determined by SDS-PAGE
Host:	Rabbit
Clonality:	polyclonal
Clone ID:	None
IsoType:	IgG
Storage:	PBS with 0.02% sodium azide and 50% glycerol pH 7.3, -20°C for 12 months (Avoid repeated freeze / thaw cycles.)

### Background

Adapter protein implicated in the regulation of a large spectrum of both general and specialized signaling pathways. Binds to a large number of partners, usually by recognition of a phosphoserine or phosphothreonine motif. Binding generally results in the modulation of the activity of the binding partner. Negatively regulates the kinase activity of PDPK1.

### Immunogen information

Immunogen:	tyrosine 3-monooxygenase/tryptophan 5-monooxygenase activation protein, eta polypeptide
Synonyms:	14 3 3 protein eta, 14-3-3, 14-3-3 eta, Protein AS1, YWHA1, YWHAH
Observed MW:	28kDa
Uniprot ID :	Q04917

### Application

Reactivity:	Human, Mouse, Rat
Tested Application:	ELISA, WB, IF
Recommended dilution:	WB: 1:500-1:5000; IP: 1:500-1:5000; IF: 1:10-1:100

1

### Wuhan Fine Biotech Co., Ltd.

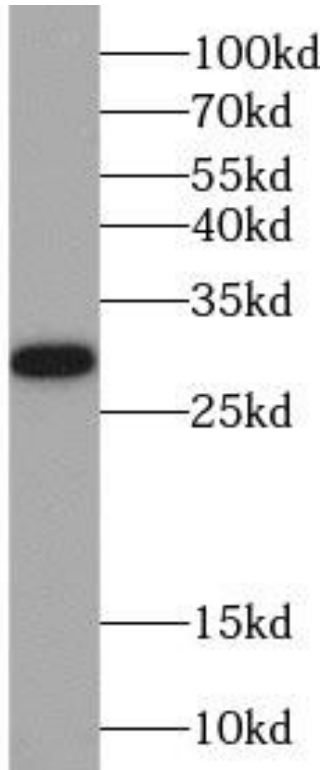
B9 Bld, High-Tech Medical Devices Park, No. 818 Gaoxin Ave. East Lake High-Tech Development Zone. Wuhan, Hubei, China(430206)

Tel : (0086)027-87384275

Fax: (0086)027-87800889

[www.fn-test.com](http://www.fn-test.com)

Image:



human brain tissue were subjected to SDS PAGE followed by western blot with FNab09576(YWHAH antibody) at dilution of 1:300