

## anti- WSB2 antibody

### Product Information

Catalog No.:	FNab09527
Size:	100µg
Form:	liquid
Purification:	Immunogen affinity purified
Purity:	≥95% as determined by SDS-PAGE
Host:	Rabbit
Clonality:	polyclonal
Clone ID:	None
IsoType:	IgG
Storage:	PBS with 0.02% sodium azide and 50% glycerol pH 7.3, -20°C for 12 months (Avoid repeated freeze / thaw cycles.)

### Background

May be a substrate-recognition component of a SCF-like ECS(Elongin-Cullin-SOCS-box protein) E3 ubiquitin ligase complex which mediates the ubiquitination and subsequent proteasomal degradation of target proteins.

### Immunogen information

Immunogen:	WD repeat and SOCS box-containing 2
Synonyms:	CS box containing WD protein, SBA2, WSB 2, WSB2
Observed MW:	47 kDa
Uniprot ID :	Q9NYS7

### Application

Reactivity:	Human, Mouse, Rat
Tested Application:	ELISA, WB, IHC, IF, IP
Recommended dilution:	WB: 1:500-1:5000; IP: 1:200-1:2000; IHC: 1:20-1:200; IF: 1:10-1:100
Image:	

1

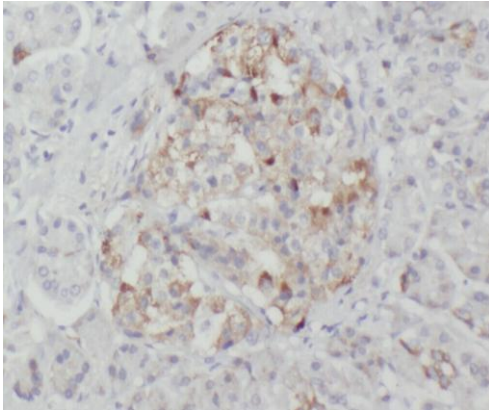
### Wuhan Fine Biotech Co., Ltd.

B9 Bld, High-Tech Medical Devices Park, No. 818 Gaoxin Ave. East Lake High-Tech Development Zone. Wuhan, Hubei, China(430206)

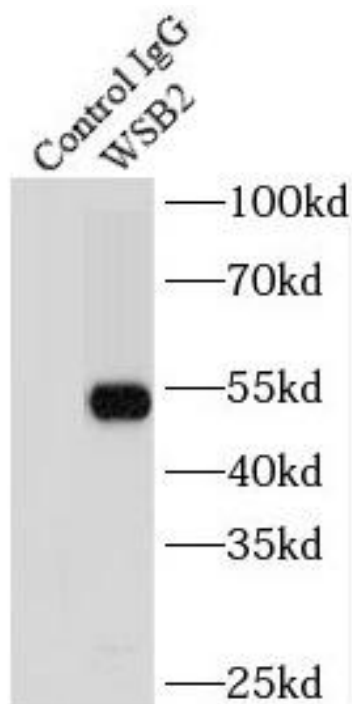
Tel : (0086)027-87384275

Fax: (0086)027-87800889

[www.fn-test.com](http://www.fn-test.com)



Immunohistochemistry of paraffin-embedded human prostate cancer using FNab09527(WSB2 antibody) at dilution of 1:50



IP Result of anti-WSB2 (IP:FNab09527, 3ug; Detection:FNab09527 1:800) with mouse kidney tissue lysate 6000ug.

mouse kidney tissue were subjected to SDS PAGE followed by western blot with FNab09527(WSB2 antibody) at dilution of 1:1000

