

anti- WDFY3 antibody

Product Information

Catalog No.:	FNab09479
Size:	100µg
Form:	liquid
Purification:	Immunogen affinity purified
Purity:	≥95% as determined by SDS-PAGE
Host:	Rabbit
Clonality:	polyclonal
Clone ID:	None
IsoType:	IgG
Storage:	PBS with 0.02% sodium azide and 50% glycerol pH 7.3, -20°C for 12 months (Avoid repeated freeze / thaw cycles.)

Background

Required for selective autophagy (aggrephagy) but not for autophagic degradation of bulk cytosol in response to starvation. Involved in the formation and degradation of cytoplasmic polyubiquitin-containing bodies (p62 bodies, ALIS/aggresome-like induced structures). May play a role as adaptor or scaffolding protein by promoting the association of the E3-like ligase ATG12-ATG5-ATG16L and LC3 to ubiquitinated target substrate. The association with GABARAP is required for its recruitment to LC3B-positive p62 bodies suggesting a role in targeting certain p62 structures for clearance. Involved in midbody ring degradation.

Immunogen information

Immunogen:	WD repeat and FYVE domain containing 3
Synonyms:	ALFY, Autophagy linked FYVE protein, KIAA0993, WDFY3, ZFYVE25
Observed MW:	None
Uniprot ID :	Q8IZQ1

Application

Wuhan Fine Biotech Co., Ltd.

B9 Bld, High-Tech Medical Devices Park, No. 818 Gaoxin Ave. East Lake High-Tech Development Zone. Wuhan, Hubei, China (430206)

Tel : (0086)027-87384275

Fax: (0086)027-87800889

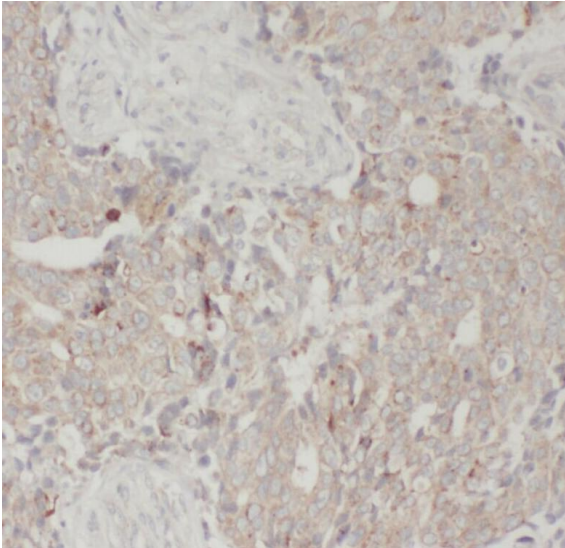
www.fn-test.com

Reactivity: Human, Mouse, Rat

Tested Application: ELISA, IHC

Recommended dilution:IHC: 1:20-1:200

Image:



Immunohistochemical of paraffin-embedded human breast cancer using FNab09479(WDFY3 antibody) at dilution of 1:50