

## anti- VTA1 antibody

### Product Information

Catalog No.:	FNab09460
Size:	100µg
Form:	liquid
Purification:	Immunogen affinity purified
Purity:	≥95% as determined by SDS-PAGE
Host:	Rabbit
Clonality:	polyclonal
Clone ID:	None
IsoType:	IgG
Storage:	PBS with 0.02% sodium azide and 50% glycerol pH 7.3, -20°C for 12 months (Avoid repeated freeze / thaw cycles.)

### Background

Involved in the endosomal multivesicular bodies(MVB) pathway. MVBs contain intraluminal vesicles(ILVs) that are generated by invagination and scission from the limiting membrane of the endosome and mostly are delivered to lysosomes enabling degradation of membrane proteins, such as stimulated growth factor receptors, lysosomal enzymes and lipids. Thought to be a cofactor of VPS4A/B, which catalyzes disassembles membrane-associated ESCRT-III assemblies. Involved in the sorting and down-regulation of EGFR(By similarity). Involved in HIV-1 budding.

### Immunogen information

Immunogen:	Vps20-associated 1 homolog( <i>S. cerevisiae</i> )
Synonyms:	C6orf55, DRG 1, DRG1, FLJ27228, HSPC228, LIP5, LYST interacting protein 5, My012, SBP1, SKD1 binding protein 1, VTA1
Observed MW:	34 kDa, observed 45 kDa
Uniprot ID :	Q9NP79

### Application

Reactivity:	Human, Mouse, Rat
-------------	-------------------

### Wuhan Fine Biotech Co., Ltd.

B9 Bld, High-Tech Medical Devices Park, No. 818 Gaoxin Ave. East Lake High-Tech Development Zone. Wuhan, Hubei, China(430206)

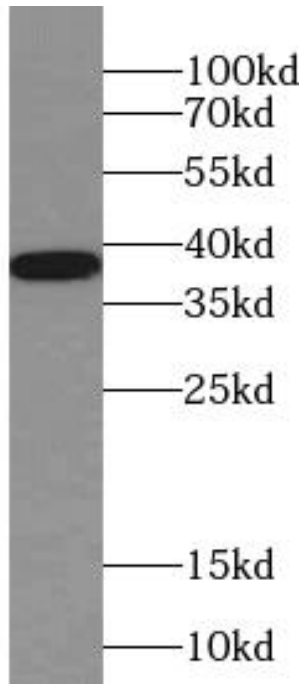
Tel : (0086)027-87384275

Fax: (0086)027-87800889 [www.fn-test.com](http://www.fn-test.com)

Tested Application: ELISA, WB, IF

Recommended dilution: WB: 1:1000-1:10000;IF: 1:10-1:100

Image:



human kidney tissue were subjected to SDS PAGE followed by western blot with FNab09460(VTA1 antibody) at dilution of 1:500

**Wuhan Fine Biotech Co., Ltd.**

B9 Bld, High-Tech Medical Devices Park, No. 818 Gaoxin Ave. East Lake High-Tech Development Zone. Wuhan, Hubei, China(430206)

Tel : (0086)027-87384275

Fax: (0086)027-87800889 [www.fn-test.com](http://www.fn-test.com)