

anti- UBE2F antibody

Product Information

Catalog No.:	FNab09173
Size:	100µg
Form:	liquid
Purification:	Immunogen affinity purified
Purity:	≥95% as determined by SDS-PAGE
Host:	Rabbit
Clonality:	polyclonal
Clone ID:	None
IsoType:	IgG
Storage:	PBS with 0.02% sodium azide and 50% glycerol pH 7.3, -20°C for 12 months (Avoid repeated freeze / thaw cycles.)

Background

Accepts the ubiquitin-like protein NEDD8 from the UBA3-NAE1 E1 complex and catalyzes its covalent attachment to other proteins. The specific interaction with the E3 ubiquitin ligase RBX2, but not RBX1, suggests that the RBX2-UBE2F complex neddylates specific target proteins, such as CUL5.

Immunogen information

Immunogen:	ubiquitin-conjugating enzyme E2F(putative)
Synonyms:	NCE2, NEDD8 carrier protein UBE2F, NEDD8 conjugating enzyme 2, NEDD8 protein ligase UBE2F, UBE2F
Observed MW:	21 kDa
Uniprot ID :	Q969M7

Application

Reactivity:	Human, Mouse, Rat
Tested Application:	ELISA, WB, IHC, IF
Recommended dilution:	WB: 1:500-1:2000; IHC: 1:20-1:200; IF: 1:50-1:500

1

Wuhan Fine Biotech Co., Ltd.

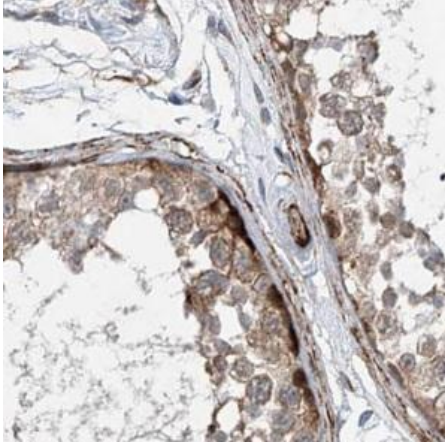
B9 Bld, High-Tech Medical Devices Park, No. 818 Gaoxin Ave. East Lake High-Tech Development Zone. Wuhan, Hubei, China(430206)

Tel : (0086)027-87384275

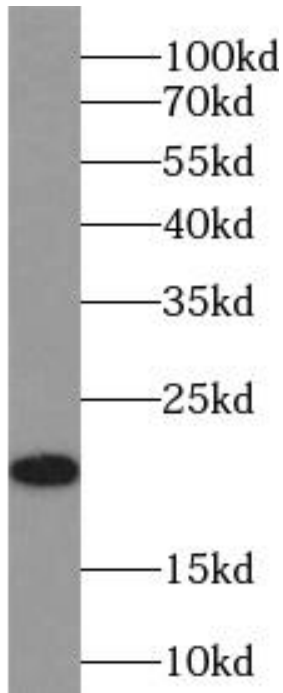
Fax: (0086)027-87800889

www.fn-test.com

Image:



Immunohistochemistry of paraffin-embedded human skin using FNab09173(UBE2F antibody) at dilution of 1:100



Jurkat cells were subjected to SDS PAGE followed by western blot with FNab09173(UBE2F antibody) at dilution of 1:500