

anti- UBE2C antibody

Product Information

Catalog No.:	FNab09166
Size:	100µg
Form:	liquid
Purification:	Protein A+G purification
Purity:	≥95% as determined by SDS-PAGE
Host:	Mouse
Clonality:	monoclonal
Clone ID:	7E3
IsoType:	IgG1
Storage:	PBS with 0.02% sodium azide and 50% glycerol pH 7.3, -20°C for 12 months (Avoid repeated freeze / thaw cycles.)

Background

Accepts ubiquitin from the E1 complex and catalyzes its covalent attachment to other proteins. In vitro catalyzes 'Lys-11'-and 'Lys-48'-linked polyubiquitination. Acts as an essential factor of the anaphase promoting complex/cyclosome(APC/C), a cell cycle-regulated ubiquitin ligase that controls progression through mitosis. Acts by initiating 'Lys-11'-linked polyubiquitin chains on APC/C substrates, leading to the degradation of APC/C substrates by the proteasome and promoting mitotic exit.

Immunogen information

Immunogen:	ubiquitin-conjugating enzyme E2C
Synonyms:	DJ447F3.2, UBCH10, UBE2C, Ubiquitin carrier protein C, Ubiquitin protein ligase C
Observed MW:	17 kDa
Uniprot ID :	O00762

Application

Reactivity:	Human
-------------	-------

Wuhan Fine Biotech Co., Ltd.

B9 Bld, High-Tech Medical Devices Park, No. 818 Gaoxin Ave. East Lake High-Tech Development Zone. Wuhan, Hubei, China(430206)

Tel : (0086)027-87384275

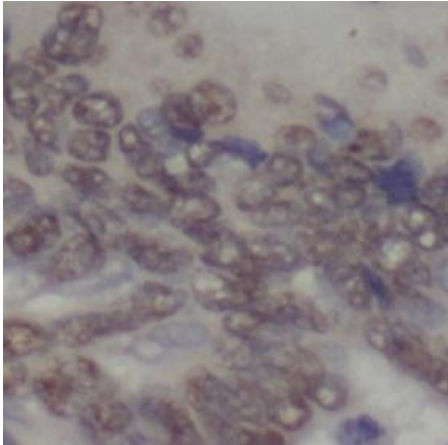
Fax: (0086)027-87800889

www.fn-test.com

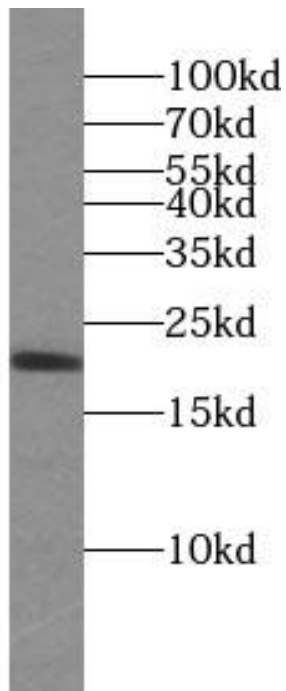
Tested Application: ELISA, IF, IHC, WB

Recommended dilution: WB: 1:500-1:2000; IHC: 1:20-1:200; IF: 1:10-1:100

Image:



Immunohistochemistry of paraffin-embedded human colon cancer slide using FNab09166(UBE2C Antibody) at dilution of 1:50



HEK-293 cells were subjected to SDS PAGE followed by western blot with FNab09166(UBE2C Antibody) at dilution of 1:1000

Wuhan Fine Biotech Co., Ltd.

B9 Bld, High-Tech Medical Devices Park, No. 818 Gaoxin Ave. East Lake High-Tech Development Zone. Wuhan, Hubei, China(430206)

Tel : (0086)027-87384275

Fax: (0086)027-87800889

www.fn-test.com