

TSP50 antibody

Product Information

Catalog No.:	FNab09051
Size:	100µg
Form:	liquid
Purification:	Immunogen affinity purified
Purity:	≥95% as determined by SDS-PAGE
Host:	Rabbit
Clonality:	polyclonal
IsoType:	IgG
Storage:	PBS with 0.02% sodium azide and 50% glycerol pH 7.3, -20°C for 12 months (Avoid repeated freeze / thaw cycles.)

Background

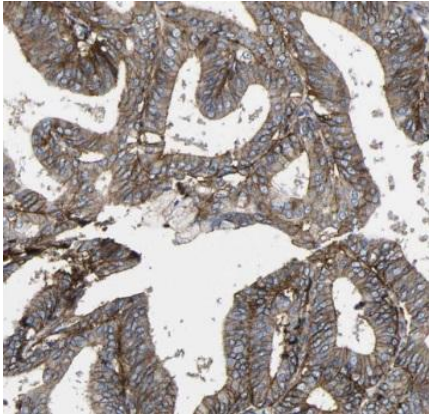
TSP50 (Testis-specific protease-like protein 50) is also named as PRSS50, CT20 and belongs to the peptidase S1 family. It can enhance the expression of NFκB target genes involved in cell proliferation, and promotes cell proliferation, at least partially, through activation of the NFκB signalling pathway (PMID:21385156). There are two protein bands of 37 kDa and 43 kDa to be detected in human testes that the difference is most likely caused by posttranslational proteolytic cleavage (PMID:11782390). The full length protein has a signal peptide with 39 amino acids and two glycosylation sites.

Immunogen information

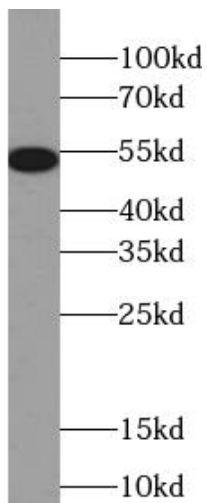
Immunogen:	testes-specific protease 50
Synonyms:	Cancer/testis antigen 20, CT20, PRSS50, Serine protease 50, testes protease 50, TSP50
Observed MW:	50 kDa
Uniprot ID :	Q9UI38

Application

Reactivity:	Human, Mouse
Tested Application:	ELISA, WB, IHC, IF
Recommended dilution:	WB: 1:500-1:5000; IHC: 1:20-1:200; IF: 1:10-1:100
Image:	



Immunohistochemistry of paraffin-embedded human ovary tumor using FNab09051(TSP50antibody) at dilution of 1:50



MCF7 cells were subjected to SDS PAGE followed by western blot with FNab09051(TSP50 antibody) at dilution of 1:300