

anti- TRPC4AP antibody

Product Information

Catalog No.:	FNab09017
Size:	100µg
Form:	liquid
Purification:	Protein A+G purification
Purity:	≥95% as determined by SDS-PAGE
Host:	Mouse
Clonality:	monoclonal
Clone ID:	1C0
IsoType:	IgG1
Storage:	PBS with 0.02% sodium azide and 50% glycerol pH 7.3, -20°C for 12 months (Avoid repeated freeze / thaw cycles.)

Background

Substrate-specific adapter of a DCX(DDB1-CUL4-X-box) E3 ubiquitin-protein ligase complex required for cell cycle control. The DCX(TRUSS) complex specifically mediates the polyubiquitination and subsequent degradation of MYC. Also participates in the activation of NFκB1 in response to ligation of TNFRSF1A, possibly by linking TNFRSF1A to the IKK signalosome. Involved in JNK activation via its interaction with TRAF2. Also involved in elevation of endoplasmic reticulum Ca(2+) storage reduction in response to CHRM1.

Immunogen information

Immunogen:	transient receptor potential cation channel, subfamily C, member 4 associated protein
Synonyms:	C20orf188, Protein TAP1, Protein TRUSS, Trp4 associated protein, Trpc4 associated protein, TRPC4AP, TRRP4AP, TRUSS
Observed MW:	91 kDa
Uniprot ID :	Q8TEL6

Application

Wuhan Fine Biotech Co., Ltd.

B9 Bld, High-Tech Medical Devices Park, No. 818 Gaoxin Ave. East Lake High-Tech Development Zone. Wuhan, Hubei, China(430206)

Tel : (0086)027-87384275

Fax: (0086)027-87800889

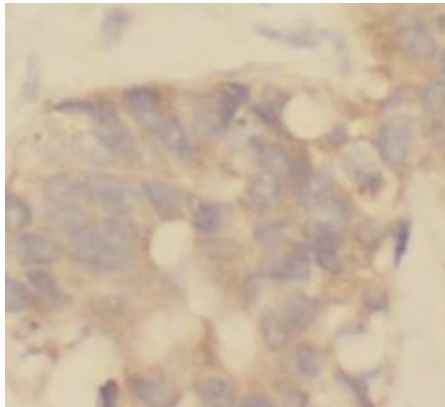
www.fn-test.com

Reactivity: Human

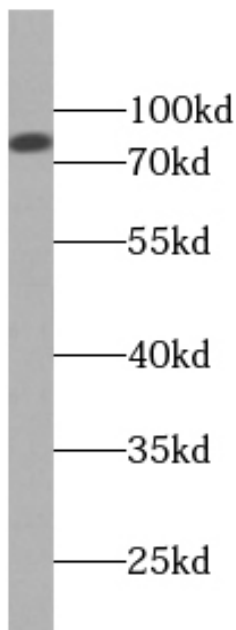
Tested Application: ELISA, WB, IHC

Recommended dilution: WB: 1:500-1:5000; IHC: 1:20-1:200

Image:



Immunohistochemistry of paraffin-embedded human breast cancer slide using FNab09017(TRPC4AP Antibody) at dilution of 1:50



human heart tissue were subjected to SDS PAGE followed by western blot with FNab09017(TRPC4AP antibody) at dilution of 1:500

Wuhan Fine Biotech Co., Ltd.

B9 Bld, High-Tech Medical Devices Park, No. 818 Gaoxin Ave. East Lake High-Tech Development Zone. Wuhan, Hubei, China(430206)

Tel : (0086)027-87384275

Fax: (0086)027-87800889

www.fn-test.com