

anti- Trefoil factor 1 antibody

Product Information

Catalog No.:	FNab08958
Size:	100µg
Form:	liquid
Purification:	Immunogen affinity purified
Purity:	≥95% as determined by SDS-PAGE
Host:	Rabbit
Clonality:	polyclonal
Clone ID:	None
IsoType:	IgG
Storage:	PBS with 0.02% sodium azide and 50% glycerol pH 7.3, -20°C for 12 months (Avoid repeated freeze / thaw cycles.)

Background

Members of the trefoil family are characterized by having at least one copy of the trefoil motif, a 40-amino acid domain that contains three conserved disulfides. They are stable secretory proteins expressed in gastrointestinal mucosa. Their functions are not defined, but they may protect the mucosa from insults, stabilize the mucus layer, and affect healing of the epithelium. This gene, which is expressed in the gastric mucosa, has also been studied because of its expression in human tumors. This gene and two other related trefoil family member genes are found in a cluster on chromosome 21.

Immunogen information

Immunogen:	trefoil factor 1
Synonyms:	D21S21, HP1.A, HPS2, pNR 2, Polypeptide P1.A, Protein pS2, pS2, TFF1, trefoil factor 1
Observed MW:	12 kDa
UniprotID :	P04155

Application

Wuhan Fine Biotech Co., Ltd.

B9 Bld, High-Tech Medical Devices Park, No. 818 GaoxinAve. East Lake High-Tech Development Zone. Wuhan, Hubei, China(430206)

Tel : (0086)027-87384275

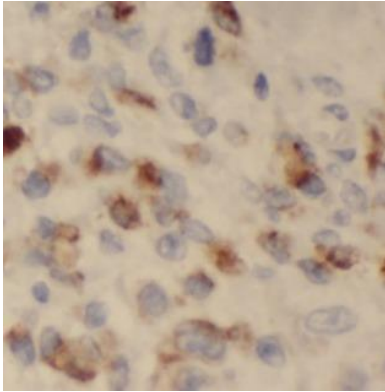
Fax: (0086)027-87800889 www.fn-test.com

Reactivity: Human, Mouse, Rat

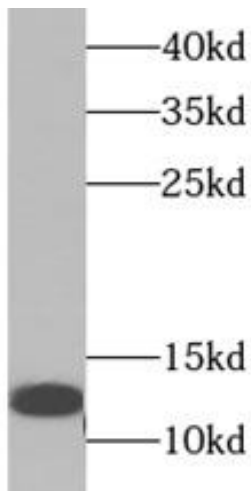
Tested Application: ELISA, WB, IHC

Recommended dilution: WB: 1:500 - 1:1000; IHC: 1:50 - 1:200

Image:



Immunohistochemistry of paraffin-embedded human stomach cancer using FNab08958(TFF1 antibody) at dilution of 1:50



human kidney tissue were subjected to SDS PAGE followed by western blot with FNab08958(TFF1 antibody) at dilution of 1:1000

Wuhan Fine Biotech Co., Ltd.

B9 Bld, High-Tech Medical Devices Park, No. 818 GaoxinAve. East Lake High-Tech Development Zone. Wuhan, Hubei, China(430206)

Tel : (0086)027-87384275

Fax: (0086)027-87800889 www.fn-test.com