

anti- TRAPA/SSR1 antibody

Product Information

Catalog No.:	FNab08942
Size:	100µg
Form:	liquid
Purification:	Immunogen affinity purified
Purity:	≥95% as determined by SDS-PAGE
Host:	Rabbit
Clonality:	polyclonal
Clone ID:	None
IsoType:	IgG
Storage:	PBS with 0.02% sodium azide and 50% glycerol pH 7.3, -20°C for 12 months (Avoid repeated freeze / thaw cycles.)

Background

TRAPA(translocon-associated protein subunit alpha), also known as SSR1(signal sequence receptor subunit alpha), is a 34-kDa single-spanning membrane glycoprotein of the endoplasmic reticulum(ER)(PMID: 8050590). It is a part of the tetrameric TRAP complex(TRAP-alpha, TRAP-beta, TRAP-delta and TRAP-gamma) which functions in regulating the retention of ER resident proteins(PMID: 7916687). The TRAP complex is also involved in endoplasmic reticulum-associated degradation(ERAD)(PMID: 17380188).

Immunogen information

Immunogen:	signal sequence receptor, alpha
Synonyms:	DKFZp781N23103, FLJ14232, FLJ22100, FLJ23034, FLJ78242, FLJ93042, SSR alpha, SSR1, TRAP alpha, TRAPA
Observed MW:	34 kDa
UniprotID :	P43307

Application

Reactivity:	Human
-------------	-------

Wuhan Fine Biotech Co., Ltd.

B9 Bld, High-Tech Medical Devices Park, No. 818 GaoxinAve.East Lake High-Tech Development Zone.Wuhan, Hubei, China(430206)

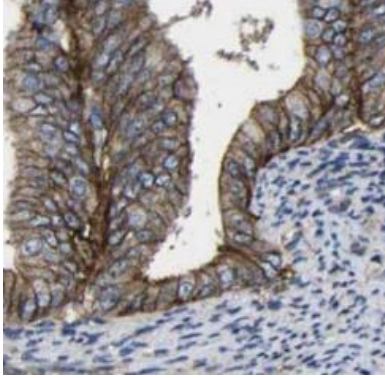
Tel : (0086)027-87384275

Fax: (0086)027-87800889 www.fn-test.com

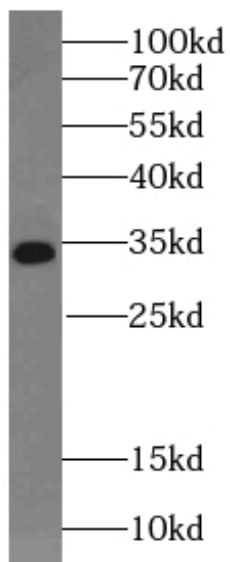
Tested Application: ELISA, WB, IHC

Recommended dilution: WB: 1:200-1:1000; IHC: 1:20-1:200

Image:



Immunohistochemistry of paraffin-embedded human ovary tumor using FNab08942(TRAPA, SSR1 antibody) at dilution of 1:100



human liver tissue were subjected to SDS PAGE followed by western blot with FNab08942(TRAPA, SSR1 antibody) at dilution of 1:250

Wuhan Fine Biotech Co., Ltd.

B9 Bld, High-Tech Medical Devices Park, No. 818 GaoxinAve. East Lake High-Tech Development Zone. Wuhan, Hubei, China(430206)

Tel : (0086)027-87384275

Fax: (0086)027-87800889 www.fn-test.com