

anti- TOM20 antibody

Product Information

Catalog No.:	FNab08858
Size:	100µg
Form:	liquid
Purification:	Immunogen affinity purified
Purity:	≥95% as determined by SDS-PAGE
Host:	Rabbit
Clonality:	polyclonal
Clone ID:	None
IsoType:	IgG
Storage:	PBS with 0.02% sodium azide and 50% glycerol pH 7.3, -20°C for 12 months (Avoid repeated freeze / thaw cycles.)

Background

TOMM20, also named as KIAA0016, belongs to the Tom20 family. It is a central component of the receptor complex responsible for the recognition and translocation of cytosolically synthesized mitochondrial preproteins. Together with TOM22, TOMM20 functions as the transit peptide receptor at the surface of the mitochondrion outer membrane and facilitates the movement of preproteins into the TOM40 translocation pore. TOMM20 is characterized as major docking receptors to mediate the recognition by different mechanisms.

Immunogen information

Immunogen:	translocase of outer mitochondrial membrane 20 homolog (yeast)
Synonyms:	KIAA0016, MAS20, MOM19, TOM20, TOMM20
Observed MW:	16 kDa
Uniprot ID :	Q15388

Application

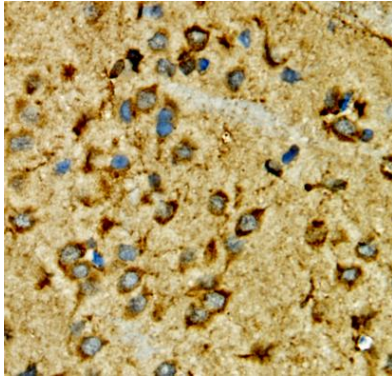
Reactivity:	Human, Mouse, Rat
Tested Application:	ELISA, IHC, WB, IF

Wuhan Fine Biotech Co., Ltd.

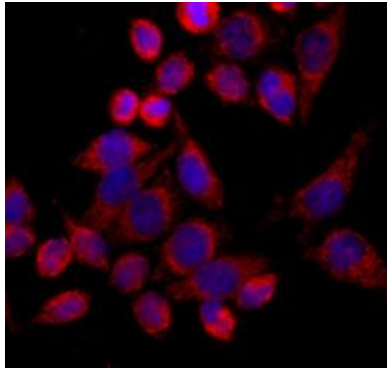
B9 Bld, High-Tech Medical Devices Park, No. 818 Gaoxin Ave. East Lake High-Tech Development Zone. Wuhan, Hubei, China(430206)

Recommended dilution: WB: 1:500 - 1:2000; IHC: 1:50 - 1:200; IF: 1:20 - 1:50

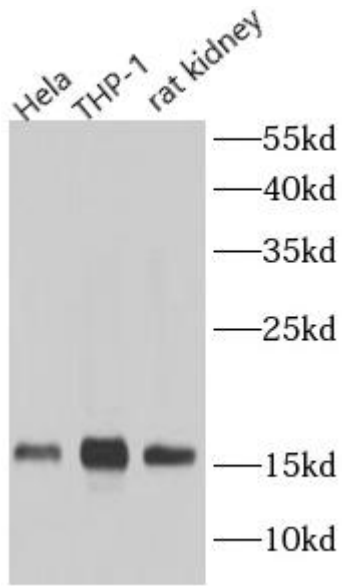
Image:



Immunohistochemistry of paraffin-embedded rat brain using FNab08858(TOM20 antibody) at dilution of 1:100



Immunofluorescence analysis of HeLa cells using FNab08858(TOM20 antibody) at dilution of 1:100. Blue: DAPI for nuclear staining.



Various lysates were subjected to SDS PAGE followed by western blot with FNab08858(TOM20 Antibody) at dilution of 1:1000