

## anti- TGM1 antibody

### Product Information

Catalog No.:	FNab08649
Size:	100µg
Form:	liquid
Purification:	Immunogen affinity purified
Purity:	≥95% as determined by SDS-PAGE
Host:	Rabbit
Clonality:	polyclonal
Clone ID:	None
IsoType:	IgG
Storage:	PBS with 0.02% sodium azide and 50% glycerol pH 7.3, -20°C for 12 months (Avoid repeated freeze / thaw cycles.)

### Background

The protein encoded by this gene is a membrane protein that catalyzes the addition of an alkyl group from an alkylamine to a glutamine residue of a protein, forming an alkylglutamine in the protein. This protein alkylation leads to crosslinking of proteins and catenation of polyamines to proteins. This gene contains either one or two copies of a 22 nt repeat unit in its 3' UTR. Mutations in this gene have been associated with autosomal recessive lamellar ichthyosis (LI) and nonbullous congenital ichthyosiform erythroderma (NCIE).

### Immunogen information

Immunogen:	transglutaminase 1 (K polypeptide epidermal type I, protein-glutamine-gamma-glutamyltransferase)
Synonyms:	KTG
Observed MW:	90 kDa
UniprotID :	P22735

### Application

Reactivity:	Human, Rat
-------------	------------

### Wuhan Fine Biotech Co., Ltd.

B9 Bld, High-Tech Medical Devices Park, No. 818 GaoxinAve. East Lake High-Tech Development Zone. Wuhan, Hubei, China(430206)

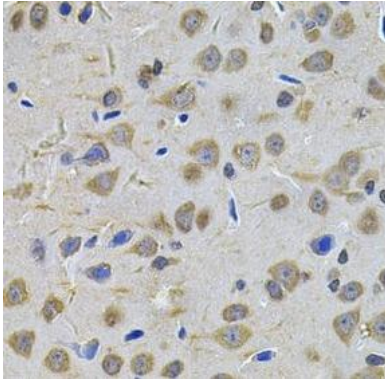
Tel : (0086)027-87384275

Fax: (0086)027-87800889 [www.fn-test.com](http://www.fn-test.com)

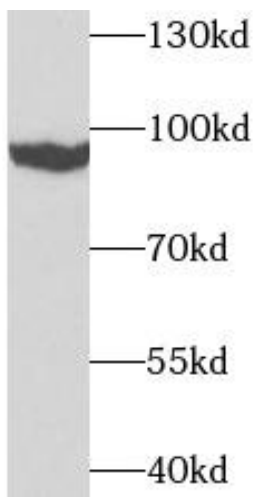
Tested Application: ELISA, WB, IHC

Recommended dilution: WB: 1:500 - 1:2000; IHC: 1:50 - 1:200

Image:



Immunohistochemistry of paraffin-embedded rat brain using FNab08649(TGM1 antibody) at dilution of 1:200



293T cells were subjected to SDS PAGE followed by western blot with FNab08649(TGM1 antibody) at dilution of 1:1000

**Wuhan Fine Biotech Co., Ltd.**

B9 Bld, High-Tech Medical Devices Park, No. 818 GaoxinAve. East Lake High-Tech Development Zone. Wuhan, Hubei, China(430206)

Tel : (0086)027-87384275

Fax: (0086)027-87800889 [www.fn-test.com](http://www.fn-test.com)