

anti- TBCE antibody

Product Information

Catalog No.:	FNab08520
Size:	100µg
Form:	liquid
Purification:	Immunogen affinity purified
Purity:	≥95% as determined by SDS-PAGE
Host:	Rabbit
Clonality:	polyclonal
Clone ID:	None
IsoType:	IgG
Storage:	PBS with 0.02% sodium azide and 50% glycerol pH 7.3, -20°C for 12 months (Avoid repeated freeze / thaw cycles.)

Background

Tubulin-folding protein; involved in the second step of the tubulin folding pathway. Seems to be implicated in the maintenance of the neuronal microtubule network. Involved in regulation of tubulin heterodimer dissociation.

Immunogen information

Immunogen:	tubulin folding cofactor E
Synonyms:	None
Observed MW:	59 kDa
UniprotID :	Q15813

Application

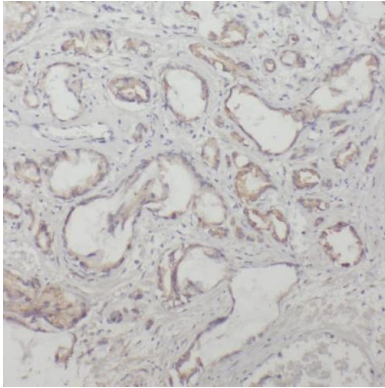
Reactivity:	Human, Mouse, Rat
Tested Application:	ELISA, WB, IHC
Recommended dilution:	WB: 1:500-1:2000; IHC: 1:20-1:200
Image:	

Wuhan Fine Biotech Co., Ltd.

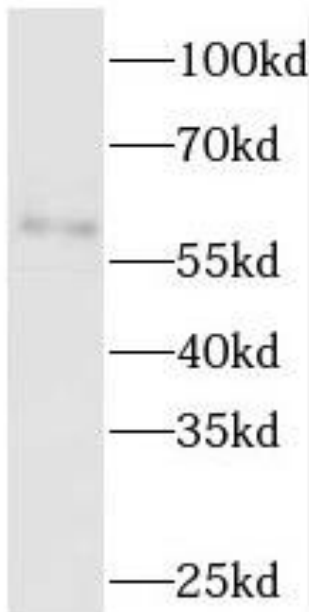
B9 Bld, High-Tech Medical Devices Park, No. 818 Gaoxin Ave. East Lake High-Tech Development Zone. Wuhan, Hubei, China (430206)

Tel : (0086)027-87384275

Fax: (0086)027-87800889 www.fn-test.com



Immunohistochemistry of paraffin-embedded human prostate cancer using FNab08520(TBCE antibody) at dilution of 1:50



human liver tissue were subjected to SDS PAGE followed by western blot with FNab08520(TBCE antibody) at dilution of 1:500