

## anti- SYCE1 antibody

### Product Information

Catalog No.:	FNab08410
Size:	100µg
Form:	liquid
Purification:	Immunogen affinity purified
Purity:	≥95% as determined by SDS-PAGE
Host:	Rabbit
Clonality:	polyclonal
Clone ID:	None
IsoType:	IgG
Storage:	PBS with 0.02% sodium azide and 50% glycerol pH 7.3, -20°C for 12 months (Avoid repeated freeze / thaw cycles.)

### Background

Major component of the transverse central element of synaptonemal complexes(SCS), formed between homologous chromosomes during meiotic prophase. Requires SYCP1 in order to be incorporated into the central element. May have a role in the synaptonemal complex assembly, stabilization and recombination(By similarity).

### Immunogen information

Immunogen:	synaptonemal complex central element protein 1
Synonyms:	C10orf94
Observed MW:	40-44 kDa
UniprotID :	Q8N0S2

### Application

Reactivity:	Human, Mouse, Rat
Tested Application:	ELISA, IHC, WB, IF, IP
Recommended dilution:	WB: 1:500-1:2000; IP: 1:200-1:1000; IHC: 1:20-1:200; IF: 1:20-1:200

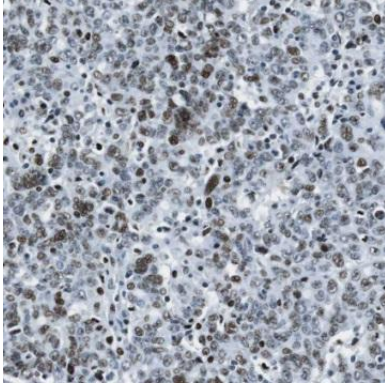
### Wuhan Fine Biotech Co., Ltd.

B9 Bld, High-Tech Medical Devices Park, No. 818 GaoxinAve. East Lake High-Tech Development Zone. Wuhan, Hubei, China(430206)

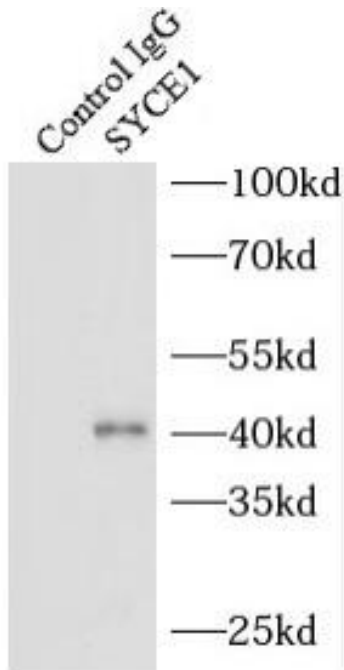
Tel : (0086)027-87384275

Fax: (0086)027-87800889 [www.fn-test.com](http://www.fn-test.com)

Image:



Immunohistochemistry of paraffin-embedded human ovary tumor using FNab08410(SYCE1 antibody) at dilution of 1:100



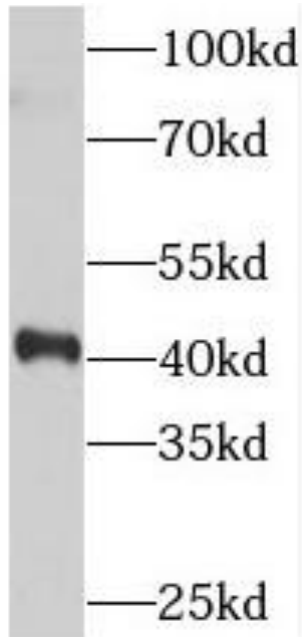
IP Result of anti-SYCE1 (IP:FNab08410, 4ug; Detection:FNab08410 1:800) with mouse testis tissue lysate 4800ug.

**Wuhan Fine Biotech Co., Ltd.**

B9 Bld, High-Tech Medical Devices Park, No. 818 GaoxinAve. East Lake High-Tech Development Zone. Wuhan, Hubei, China(430206)

Tel : (0086)027-87384275

Fax: (0086)027-87800889 [www.fn-test.com](http://www.fn-test.com)



mouse testis tissue were subjected to SDS PAGE followed by western blot with FNab08410(SYCE1 antibody) at dilution of 1:1000