

## anti- SQLE antibody

### Product Information

Catalog No.:	FNab08209
Size:	100µg
Form:	liquid
Purification:	Immunogen affinity purified
Purity:	≥95% as determined by SDS-PAGE
Host:	Rabbit
Clonality:	polyclonal
Clone ID:	None
IsoType:	IgG
Storage:	PBS with 0.02% sodium azide and 50% glycerol pH 7.3, -20°C for 12 months (Avoid repeated freeze / thaw cycles.)

### Background

SQLE, also named as ERG1, SE and SM, belongs to the squalene monooxygenase family. It catalyzes the first oxygenation step in cholesterol synthesis, acting on squalene before cyclization into the basic steroid structure. SQLE may serve as a flux-controlling enzyme beyond 3-hydroxy-3-methylglutaryl-coenzyme A reductase(HMGR, considered as rate limiting). It is also posttranslationally regulated by cholesterol-dependent proteasomal degradation.(PMID:21356516) The MW of SQLE is about 64kd.

### Immunogen information

Immunogen:	squalene epoxidase
Synonyms:	ERG1, FLJ30795, SE, SM, SQLE, squalene epoxidase, Squalene monooxygenase
Observed MW:	50 kDa
UniprotID :	Q14534

### Application

Reactivity:	Human, Mouse, Rat
-------------	-------------------

### Wuhan Fine Biotech Co., Ltd.

B9 Bld, High-Tech Medical Devices Park, No. 818 GaoxinAve.East Lake High-Tech Development Zone.Wuhan, Hubei, China(430206)

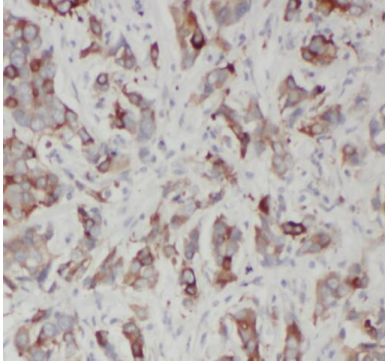
Tel :( 0086)027-87384275

Fax: (0086)027-87800889 [www.fn-test.com](http://www.fn-test.com)

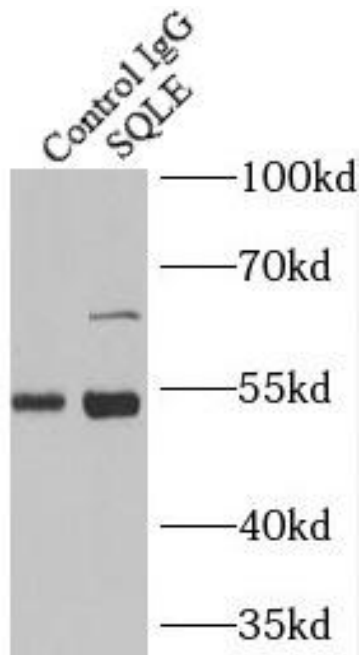
Tested Application: ELISA, WB, IHC, IP, IF

Recommended dilution: WB: 1:200-1:2000; IP: 1:200-1:1000; IHC: 1:20-1:200; IF: 1:20-1:200

Image:



Immunohistochemistry of paraffin-embedded human breast cancer tissue slide using FNab08209(SQLE Antibody) at dilution of 1:50



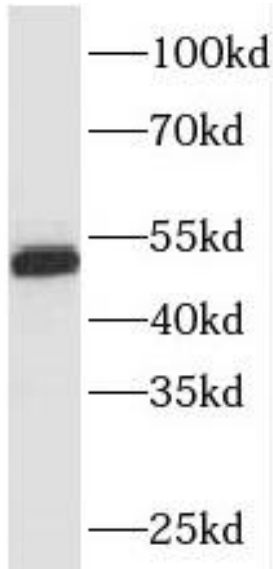
IP Result of anti-SQLE (IP:FNab08209, 3ug; Detection:FNab08209 1:300) with A549 cells lysate 920ug.

**Wuhan Fine Biotech Co., Ltd.**

B9 Bld, High-Tech Medical Devices Park, No. 818 GaoxinAve. East Lake High-Tech Development Zone. Wuhan, Hubei, China(430206)

Tel : (0086)027-87384275

Fax: (0086)027-87800889 [www.fn-test.com](http://www.fn-test.com)



A549 cells were subjected to SDS PAGE followed by western blot with FNab08209(SQLE antibody) at dilution of 1:300