

anti- SPRR2F antibody

Product Information

Catalog No.:	FNab08196
Size:	100µg
Form:	liquid
Purification:	Immunogen affinity purified
Purity:	≥95% as determined by SDS-PAGE
Host:	Rabbit
Clonality:	polyclonal
Clone ID:	None
IsoType:	IgG
Storage:	PBS with 0.02% sodium azide and 50% glycerol pH 7.3, -20°C for 12 months (Avoid repeated freeze / thaw cycles.)

Background

Cross-linked envelope protein of keratinocytes. It is a keratinocyte protein that first appears in the cell cytosol, but ultimately becomes cross-linked to membrane proteins by transglutaminase. All that results in the formation of an insoluble envelope beneath the plasma membrane (By similarity).

Immunogen information

Immunogen:	small proline-rich protein 2F
Synonyms:	small proline rich protein 2F, SPR 2F, SPRR2F
Observed MW:	8 kDa
Uniprot ID :	Q96RM1

Application

Reactivity:	Human
Tested Application:	ELISA, IHC
Recommended dilution: IHC:	1:20-1:200

Wuhan Fine Biotech Co., Ltd.

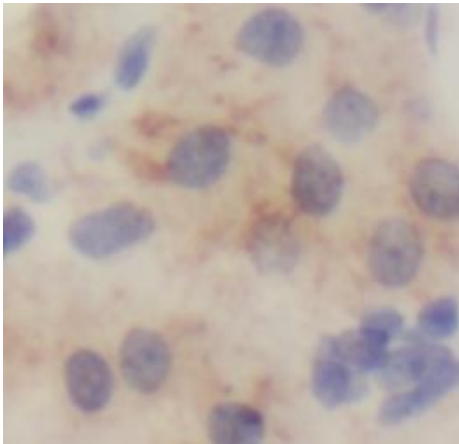
B9 Bld, High-Tech Medical Devices Park, No. 818 Gaoxin Ave. East Lake High-Tech Development Zone. Wuhan, Hubei, China (430206)

Tel : (0086)027-87384275

Fax: (0086)027-87800889

www.fn-test.com

Image:



Immunohistochemistry of paraffin-embedded human oesophagus tissue slide using FNab08196(SPRR2F Antibody) at dilution of 1:50