

anti- SPPL2A antibody

Product Information

Catalog No.:	FNab08191
Size:	100µg
Form:	liquid
Purification:	Immunogen affinity purified
Purity:	≥95% as determined by SDS-PAGE
Host:	Rabbit
Clonality:	polyclonal
Clone ID:	None
IsoType:	IgG
Storage:	PBS with 0.02% sodium azide and 50% glycerol pH 7.3, -20°C for 12 months (Avoid repeated freeze / thaw cycles.)

Background

SPPL2A(Signal peptide peptidase-like 2A) is also named as IMP3(Intramembrane protease 3), PSL2(Presenilin-like protein 2) and belongs to the peptidase A22B family. It is an aspartyl intramembrane protease, has been implicated in the proteolysis of TNF-alpha, Fas Ligand and Bri2 and endogenous signal-peptide-peptidase-like2A(SPPL2a) is localised in lysosomes/late endosomes(PMID:21896273).

Immunogen information

Immunogen:	signal peptide peptidase-like 2A
Synonyms:	None
Observed MW:	58 kDa
UniprotID :	Q8TCT8

Application

Reactivity:	Human, Mouse, Rat
Tested Application:	ELISA, WB, IHC
Recommended dilution:	WB: 1:200-1:2000; IHC: 1:20-1:200

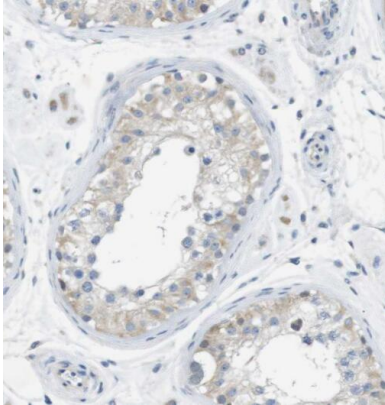
Wuhan Fine Biotech Co., Ltd.

B9 Bld, High-Tech Medical Devices Park, No. 818 GaoxinAve.East Lake High-Tech Development Zone.Wuhan, Hubei, China(430206)

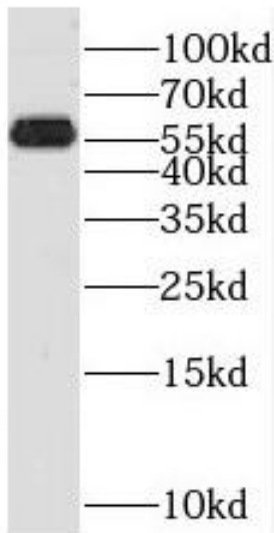
Tel : (0086)027-87384275

Fax: (0086)027-87800889 www.fn-test.com

Image:



Immunohistochemistry of paraffin-embedded human testis using FNab08191(SPPL2A antibody) at dilution of 1:50



human colon tissue were subjected to SDS PAGE followed by western blot with FNab08191(SPPL2A antibody) at dilution of 1:500

Wuhan Fine Biotech Co., Ltd.

B9 Bld, High-Tech Medical Devices Park, No. 818 GaoxinAve. East Lake High-Tech Development Zone. Wuhan, Hubei, China(430206)

Tel : (0086)027-87384275

Fax: (0086)027-87800889 www.fn-test.com