

## anti- SNRPD1 antibody

### Product Information

Catalog No.:	FNab08072
Size:	100µg
Form:	liquid
Purification:	Immunogen affinity purified
Purity:	≥95% as determined by SDS-PAGE
Host:	Rabbit
Clonality:	polyclonal
IsoType:	IgG
Storage:	PBS with 0.02% sodium azide and 50% glycerol pH 7.3, -20°C for 12 months (Avoid repeated freeze / thaw cycles.)

### Background

Core component of the spliceosomal U1, U2, U4 and U5 small nuclear ribonucleoproteins(snRNPs), the building blocks of the spliceosome. Thereby, plays an important role in the splicing of cellular pre-mRNAs. Most spliceosomal snRNPs contain a common set of Sm proteins SNRPB, SNRPD1, SNRPD2, SNRPD3, SNRPE, SNRPF and SNRPG that assemble in a heptameric protein ring on the Sm site of the small nuclear RNA to form the core snRNP. May act as a charged protein scaffold to promote snRNP assembly or strengthen snRNP-snRNP interactions through nonspecific electrostatic contacts with RNA.

### Immunogen information

Immunogen:	small nuclear ribonucleoprotein D1 polypeptide 16kDa
Synonyms:	HsT2456, Sm D autoantigen, Sm D1, SMD1, snRNP core protein D1, SNRPD, SNRPD1
Observed MW:	13 kDa
UniprotID :	P62314

### Application

Reactivity:	Human, Mouse, Rat
-------------	-------------------

### Wuhan Fine Biotech Co., Ltd.

B9 Bld, High-Tech Medical Devices Park, No. 818 GaoxinAve. East Lake High-Tech Development Zone. Wuhan, Hubei, China(430206)

Tel : (0086)027-87384275

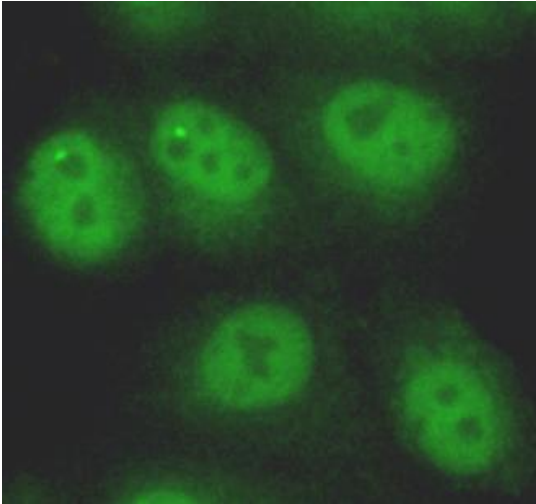
Fax: (0086)027-87800889

[www.fn-test.com](http://www.fn-test.com)

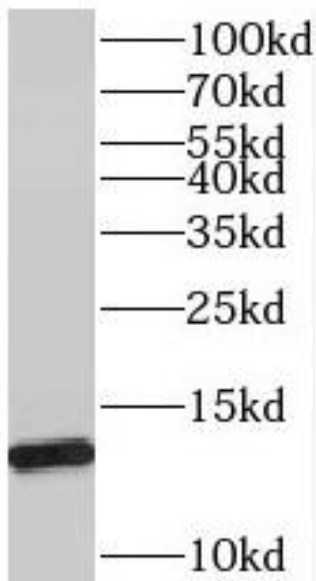
Tested Application: ELISA, WB, IF

Recommended dilution: WB: 1:500-1:2000; IF: 1:50-1:100

Image:



Immunofluorescent analysis of MCF-7 cells using FNab08072(SNRPD1 Antibody) at dilution of 1:50



HEK-293 cells were subjected to SDS PAGE followed by western blot with FNab08072(SNRPD1 antibody) at dilution of 1:500