

## anti- SMMHC antibody

### Product Information

Catalog No.:	FNab08028
Size:	100µg
Form:	liquid
Purification:	Protein A+G purification
Purity:	≥95% as determined by SDS-PAGE
Host:	Mouse
Clonality:	monoclonal
Clone ID:	7F8
IsoType:	IgG1
Storage:	PBS with 0.02% sodium azide and 50% glycerol pH 7.3, -20°C for 12 months (Avoid repeated freeze / thaw cycles.)

### Immunogen information

Immunogen:	myosin, heavy chain 11, smooth muscle
Synonyms:	MYH11, Myosin 11, Myosin heavy chain 11, SMHC, SMMHC, SMM-HC, smooth muscle myosin heavy chain
Observed MW:	230 kDa
Uniprot ID :	P35749

### Application

Reactivity:	Human, Mouse, Rat
Tested Application:	ELISA, WB
Recommended dilution:WB:	1:5000-1:20000
Image:	

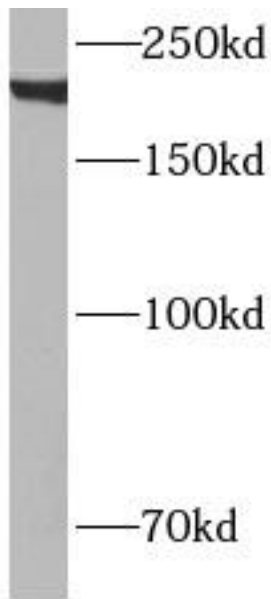
### Wuhan Fine Biotech Co., Ltd.

B9 Bld, High-Tech Medical Devices Park, No. 818 Gaoxin Ave. East Lake High-Tech Development Zone. Wuhan, Hubei, China(430206)

Tel : (0086)027-87384275

Fax: (0086)027-87800889

[www.fn-test.com](http://www.fn-test.com)



HeLa cells were subjected to SDS PAGE followed by western blot with FNab08028(SMMHC antibody) at dilution of 1:2000