

## anti- SMCR7L antibody

### Product Information

Catalog No.:	FNab08023
Size:	100µg
Form:	liquid
Purification:	Immunogen affinity purified
Purity:	≥95% as determined by SDS-PAGE
Host:	Rabbit
Clonality:	polyclonal
Clone ID:	None
IsoType:	IgG
Storage:	PBS with 0.02% sodium azide and 50% glycerol pH 7.3, -20°C for 12 months (Avoid repeated freeze / thaw cycles.)

### Background

Human SMCR7L gene encodes, MID51, the mitochondrial dynamic protein of 51 kDa (also called mitochondrial elongation factor 1, MIEF1). MID51 is a single-pass membrane protein anchored to the mitochondrial outer membrane and regulates mitochondrial morphology. Mitochondrial morphology is controlled by two opposing processes: fusion and fission. Elevated MID51 levels induce extensive mitochondrial fusion, whereas depletion of MID51 causes mitochondrial fragmentation. MID51 interacts with and recruits Drp1 to mitochondria, suggesting a critical role of MID51 in regulation of mitochondrial fusion-fission machinery in vertebrates.

### Immunogen information

Immunogen:	Smith-Magenis syndrome chromosome region, candidate 7-like
Synonyms:	dJ1104E15.3, FLJ20232, HSU79252, MID51, MIEF1, SMCR7L
Observed MW:	49 kDa
Uniprot ID :	Q9NQG6

### Application

#### Wuhan Fine Biotech Co., Ltd.

B9 Bld, High-Tech Medical Devices Park, No. 818 Gaoxin Ave. East Lake High-Tech Development Zone. Wuhan, Hubei, China (430206)

Tel : (0086)027-87384275

Fax: (0086)027-87800889

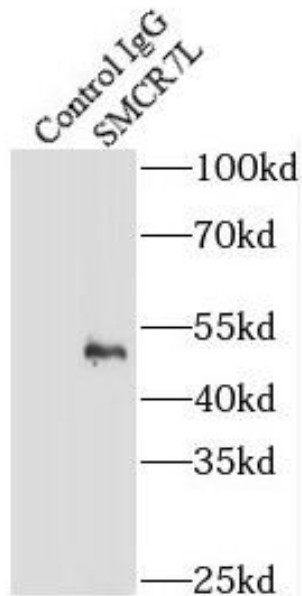
[www.fn-test.com](http://www.fn-test.com)

Reactivity: Human, Mouse, Rat

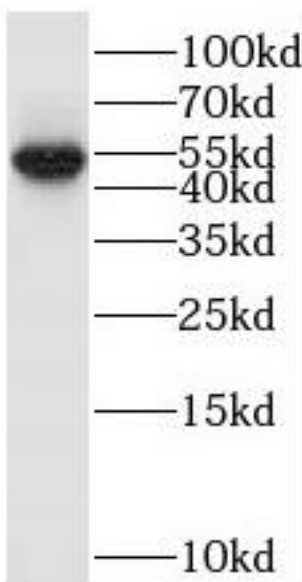
Tested Application: ELISA, WB, IF, IP

Recommended dilution: WB: 1:500-1:5000; IP: 1:500-1:5000; IF: 1:10-1:100

Image:



IP Result of anti-SMCR7L/MID51  
(IP:FNab08023, 3ug; Detection:FNab08023  
1:1000) with RAW 264.7 cells lysate 2400ug.



HT-1080 cells were subjected to SDS PAGE  
followed by western blot with  
FNab08023(SMCR7L antibody) at dilution of  
1:400