

anti- SLC25A3 antibody

Product Information

Catalog No.:	FNab07939
Size:	100µg
Form:	liquid
Purification:	Immunogen affinity purified
Purity:	≥95% as determined by SDS-PAGE
Host:	Rabbit
Clonality:	polyclonal
Clone ID:	None
IsoType:	IgG
Storage:	PBS with 0.02% sodium azide and 50% glycerol pH 7.3, -20°C for 12 months (Avoid repeated freeze / thaw cycles.)

Background

Transport of phosphate groups from the cytosol to the mitochondrial matrix. Phosphate is cotransported with H(+). May play a role regulation of the mitochondrial permeability transition pore(mPTP).

Immunogen information

Immunogen:	solute carrier family 25(mitochondrial carrier; phosphate carrier), member 3
Synonyms:	OK/SW cl.48, PHC, phosphate carrier, Phosphate transport protein, PiC, PTP, SLC25A3
Observed MW:	40 kDa
Uniprot ID :	Q00325

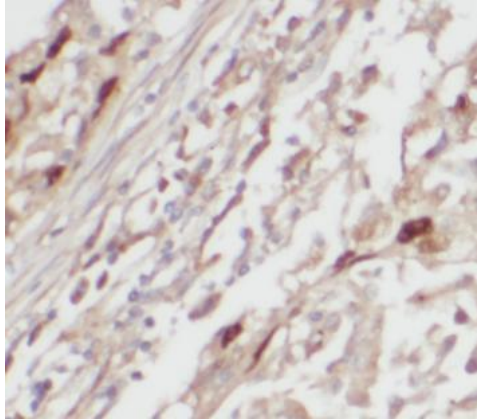
Application

Reactivity:	Human
Tested Application:	ELISA, WB, IHC
Recommended dilution:	WB: 1:500 - 1:1000; IHC: 1:50 - 1:500

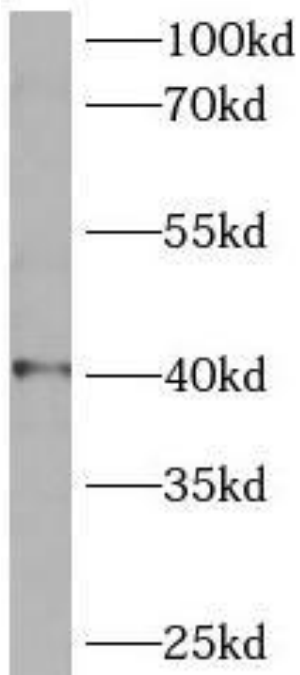
Wuhan Fine Biotech Co., Ltd.

B9 Bld, High-Tech Medical Devices Park, No. 818 Gaoxin Ave. East Lake High-Tech Development Zone. Wuhan, Hubei, China(430206)

Image:



Immunohistochemistry of paraffin-embedded human lung cancer using FNab07939(SLC25A3 antibody) at dilution of 1:50



Hela cells were subjected to SDS PAGE followed by western blot with FNab07939(SLC25A3 antibody) at dilution of 1:500