

## anti- SLC25A22 antibody

### Product Information

Catalog No.:	FNab07935
Size:	100µg
Form:	liquid
Purification:	Immunogen affinity purified
Purity:	≥95% as determined by SDS-PAGE
Host:	Rabbit
Clonality:	polyclonal
Clone ID:	None
IsoType:	IgG
Storage:	PBS with 0.02% sodium azide and 50% glycerol pH 7.3, -20°C for 12 months (Avoid repeated freeze / thaw cycles.)

### Background

Involved in the transport of glutamate across the inner mitochondrial membrane. Glutamate is cotransported with H(+).

### Immunogen information

Immunogen:	solute carrier family 25(mitochondrial carrier: glutamate), member 22
Synonyms:	GC1
Observed MW:	30-34 kDa
UniprotID :	Q9H936

### Application

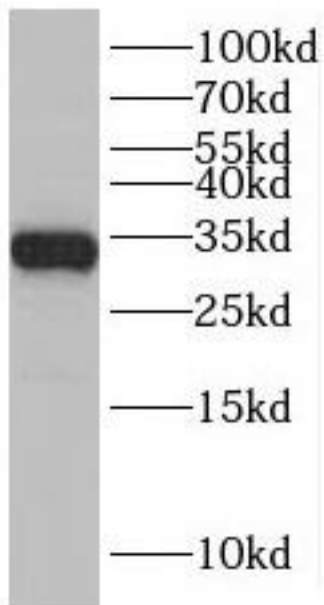
Reactivity:	Human, Mouse, Rat
Tested Application:	ELISA, WB
Recommended dilution:WB:	1:500-1:2000
Image:	

### Wuhan Fine Biotech Co., Ltd.

B9 Bld, High-Tech Medical Devices Park, No. 818 GaoxinAve.East Lake High-Tech Development Zone.Wuhan, Hubei, China(430206)

Tel : (0086)027-87384275

Fax: (0086)027-87800889 [www.fn-test.com](http://www.fn-test.com)



mouse brain tissue were subjected to SDS PAGE followed by western blot with FNab07935( SLC25A22 Antibody) at dilution of 1:1000