

anti- SLC25A1 antibody

Product Information

Catalog No.:	FNab07927
Size:	100µg
Form:	liquid
Purification:	Immunogen affinity purified
Purity:	≥95% as determined by SDS-PAGE
Host:	Rabbit
Clonality:	polyclonal
Clone ID:	None
IsoType:	IgG
Storage:	PBS with 0.02% sodium azide and 50% glycerol pH 7.3, -20°C for 12 months (Avoid repeated freeze / thaw cycles.)

Background

Involved in citrate-H(+)/malate exchange. Important for the bioenergetics of hepatic cells as it provides a carbon source for fatty acid and sterol biosyntheses, and NAD(+) for the glycolytic pathway.

Immunogen information

Immunogen:	solute carrier family 25(mitochondrial carrier; citrate transporter), member 1
Synonyms:	CIC, Citrate transport protein, CTP, SLC20A3, SLC25A1, Tricarboxylate carrier protein
Observed MW:	34 kDa
UniprotID :	P53007

Application

Reactivity:	Human, Mouse, Rat
Tested Application:	ELISA, WB, IHC, IF, IP
Recommended dilution:	WB: 1:500-1:2000; IP: 1:500-1:1000; IHC: 1:20-1:200; IF: 1:20-1:200

1

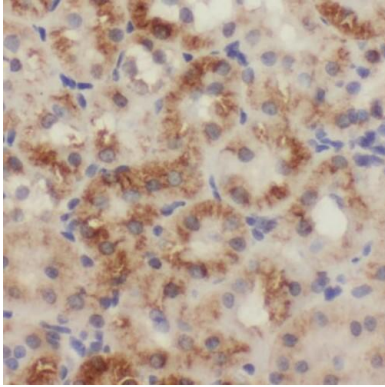
Wuhan Fine Biotech Co., Ltd.

B9 Bld, High-Tech Medical Devices Park, No. 818 GaoxinAve.East Lake High-Tech Development Zone.Wuhan, Hubei, China(430206)

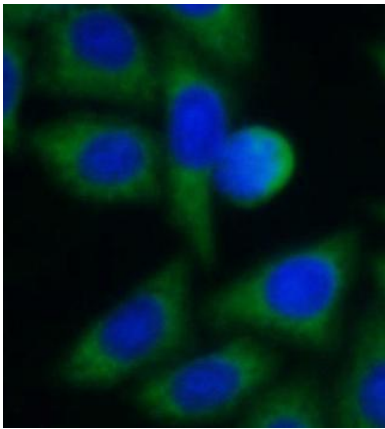
Tel : (0086)027-87384275

Fax: (0086)027-87800889 www.fn-test.com

Image:



Immunohistochemistry of paraffin-embedded human kidney using FNab07927(SLC25A1 antibody) at dilution of 1:100



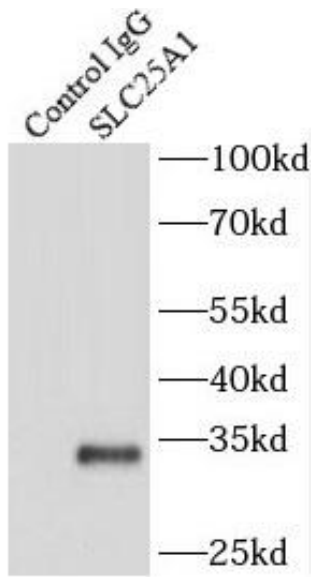
Immunofluorescent analysis of HepG2 cells using FNab07927 (SLC25A1 antibody) at dilution of 1:25 and Alexa Fluor 488-conjugated Goat Anti-Rabbit IgG(H+L)

Wuhan Fine Biotech Co., Ltd.

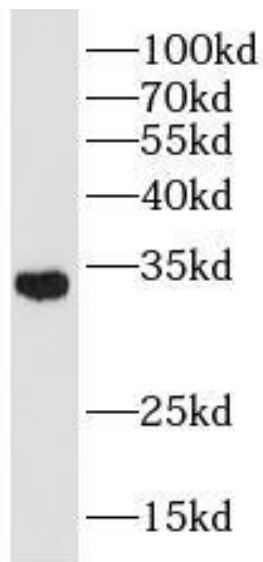
B9 Bld, High-Tech Medical Devices Park, No. 818 GaoxinAve. East Lake High-Tech Development Zone. Wuhan, Hubei, China(430206)

Tel : (0086)027-87384275

Fax: (0086)027-87800889 www.fn-test.com



IP Result of anti-SLC25A1 (IP:FNab07927, 2ug;
Detection:FNab07927 1:500) with HeLa cells
lysate 2000ug.



HeLa cells were subjected to SDS PAGE followed
by western blot with FNab07927(SLC25A1
antibody) at dilution of 1:1000