

## anti- SLC16A2 antibody

### Product Information

|               |   |
|---------------|---|
| Catalog No.:  | FNab07911   |
| Size:         | 100µg   |
| Form:         | liquid  |
| Purification: | Immunogen affinity purified   |
| Purity:       | ≥95% as determined by SDS-PAGE  |
| Host:         | Rabbit  |
| Clonality:    | polyclonal  |
| Clone ID:     | None  |
| IsoType:      | IgG   |
| Storage:      | PBS with 0.02% sodium azide and 50% glycerol pH 7.3, -20°C for 12 months (Avoid repeated freeze / thaw cycles.) |

### Background

Very active and specific thyroid hormone transporter. Stimulates cellular uptake of thyroxine(T4), triiodothyronine(T3), reverse triiodothyronine(rT3) and diiodothyronine. Does not transport Leu, Phe, Trp or Tyr.

### Immunogen information

|              |   |
|--------------|---|
| Immunogen:   | solute carrier family 16, member 2(monocarboxylic acid transporter 8) |
| Synonyms:    | MCT8, XPCT  |
| Observed MW: | 50-65 kDa   |
| UniprotID :  | P36021  |

### Application

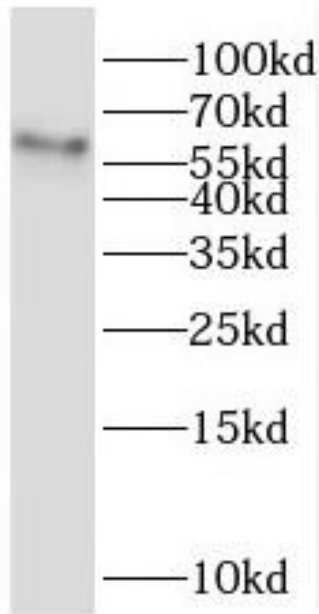
|                          |                   |
|--------------------------|-------------------|
| Reactivity:              | Human, Mouse, Rat |
| Tested Application:      | ELISA, WB         |
| Recommended dilution:WB: | 1:500-1:2000      |
| Image:                   |                   |

### Wuhan Fine Biotech Co., Ltd.

B9 Bld, High-Tech Medical Devices Park, No. 818 GaoxinAve.East Lake High-Tech Development Zone.Wuhan, Hubei, China(430206)

Tel :( 0086)027-87384275

Fax: (0086)027-87800889 [www.fn-test.com](http://www.fn-test.com)



mouse kidney tissue were subjected to SDS PAGE followed by western blot with FNab07911( SLC16A2 Antibody) at dilution of 1:1500