

## anti- SHE antibody

### Product Information

|               |   |
|---------------|---|
| Catalog No.:  | FNab07845   |
| Size:         | 100µg   |
| Form:         | liquid  |
| Purification: | Immunogen affinity purified   |
| Purity:       | ≥95% as determined by SDS-PAGE  |
| Host:         | Rabbit  |
| Clonality:    | polyclonal  |
| Clone ID:     | None  |
| IsoType:      | IgG   |
| Storage:      | PBS with 0.02% sodium azide and 50% glycerol pH 7.3, -20°C for 12 months (Avoid repeated freeze / thaw cycles.) |

### Background

SHE, also known as SH2 domain-containing adapter protein E, is a 495 amino acid protein whose molecular weight is 54 kDa. The function of SHE remains unknown. This antibody specifically recognises the 54 kDa protein.

### Immunogen information

|              |  |
|--------------|--|
| Immunogen:   | Src homology 2 domain containing E               |
| Synonyms:    | DKFZp451D1511, DKFZp686E14106, RP11 350G8.8, SHE |
| Observed MW: | 55kD   |
| UniprotID :  | Q5VZ18   |

### Application

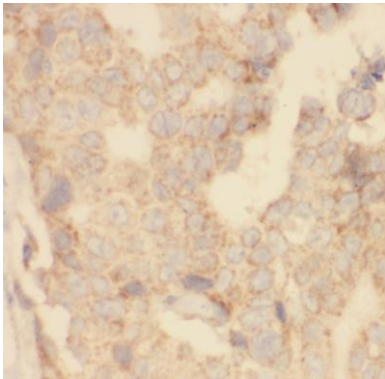
|                       |   |
|-----------------------|---|
| Reactivity:           | Human, Mouse                                      |
| Tested Application:   | ELISA, IHC, WB, IF                                |
| Recommended dilution: | WB: 1:200-1:1000; IHC: 1:20-1:200; IF: 1:10-1:100 |
| Image:                |   |

### Wuhan Fine Biotech Co., Ltd.

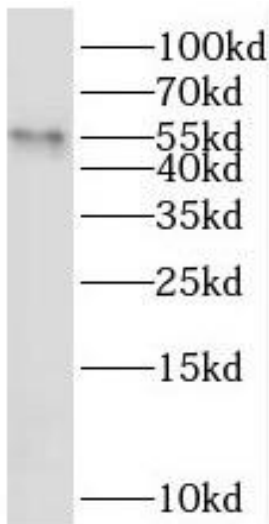
B9 Bld, High-Tech Medical Devices Park, No. 818 GaoxinAve. East Lake High-Tech Development Zone. Wuhan, Hubei, China(430206)

Tel : (0086)027-87384275

Fax: (0086)027-87800889 [www.fn-test.com](http://www.fn-test.com)



Immunohistochemistry of paraffin-embedded human breast cancer tissue slide using FNab07845(SHE Antibody) at dilution of 1:50



mouse testis tissue were subjected to SDS PAGE followed by western blot with FNab07845(SHE Antibody) at dilution of 1:300