

anti- SCYL2 antibody

Product Information

Catalog No.:	FNab07661
Size:	100µg
Form:	liquid
Purification:	Immunogen affinity purified
Purity:	≥95% as determined by SDS-PAGE
Host:	Rabbit
Clonality:	polyclonal
Clone ID:	None
IsoType:	IgG
Storage:	PBS with 0.02% sodium azide and 50% glycerol pH 7.3, -20°C for 12 months (Avoid repeated freeze / thaw cycles.)

Background

Component of AP2-containing clathrin coated structures at the plasma membrane or of endocytic coated vesicles. According to PubMed:15809293, probable serine/threonine-protein kinase that phosphorylates, in vitro, the beta2-subunit of the plasma membrane adapter complex AP2 and other proteins in presence of poly-L-lysine. According to PubMed:16914521, has no detectable kinase activity in vitro. May regulate clathrin-dependent trafficking between the TGN and/or the endosomal system.

Immunogen information

Immunogen:	SCY1-like 2(S. cerevisiae)
Synonyms:	CVAK104, KIAA1360
Observed MW:	104 kDa
UniprotID :	Q6P3W7

Application

Reactivity:	Human, Mouse, Rat
Tested Application:	ELISA, WB

Wuhan Fine Biotech Co., Ltd.

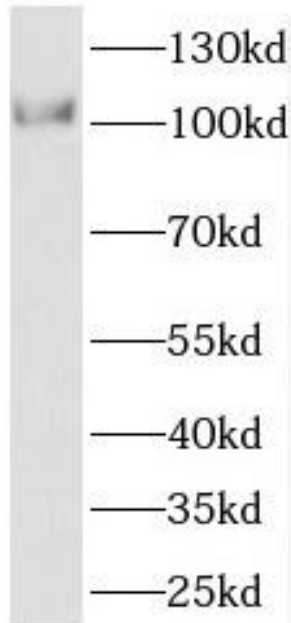
B9 Bld, High-Tech Medical Devices Park, No. 818 GaoxinAve. East Lake High-Tech Development Zone. Wuhan, Hubei, China(430206)

Tel : (0086)027-87384275

Fax: (0086)027-87800889 www.fn-test.com

Recommended dilution: WB: 1:500-1:2000

Image:



HepG2 cells were subjected to SDS PAGE followed by western blot with FNab07661(SCYL2 antibody) at dilution of 1:600

Wuhan Fine Biotech Co., Ltd.

B9 Bld, High-Tech Medical Devices Park, No. 818 GaoxinAve. East Lake High-Tech Development Zone. Wuhan, Hubei, China(430206)

Tel : (0086)027-87384275

Fax: (0086)027-87800889 www.fn-test.com