

## anti- SCFD1 antibody

### Product Information

Catalog No.:	FNab07629
Size:	100µg
Form:	liquid
Purification:	Immunogen affinity purified
Purity:	≥95% as determined by SDS-PAGE
Host:	Rabbit
Clonality:	polyclonal
Clone ID:	None
IsoType:	IgG
Storage:	PBS with 0.02% sodium azide and 50% glycerol pH 7.3, -20°C for 12 months (Avoid repeated freeze / thaw cycles.)

### Background

Plays a role in SNARE-pin assembly and Golgi-to-ER retrograde transport via its interaction with COG4. Involved in vesicular transport between the endoplasmic reticulum and the Golgi (By similarity).

### Immunogen information

Immunogen:	sec1 family domain containing 1
Synonyms:	C14orf163, KIAA0917, STXBP1L2
Observed MW:	66-72 kDa
UniprotID :	Q8WVM8

### Application

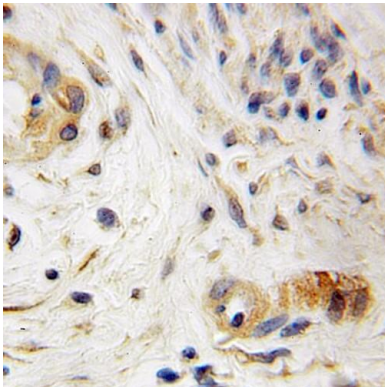
Reactivity:	Human, Mouse, Rat
Tested Application:	ELISA, WB, IHC, IF, IP
Recommended dilution:	WB: 1:500-1:2000; IP: 1:200-1:1000; IHC: 1:20-1:200; IF: 1:20-1:200
Image:	

### Wuhan Fine Biotech Co., Ltd.

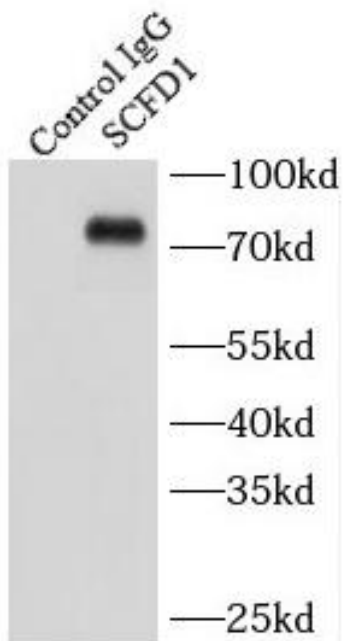
B9 Bld, High-Tech Medical Devices Park, No. 818 GaoxinAve. East Lake High-Tech Development Zone. Wuhan, Hubei, China(430206)

Tel : (0086)027-87384275

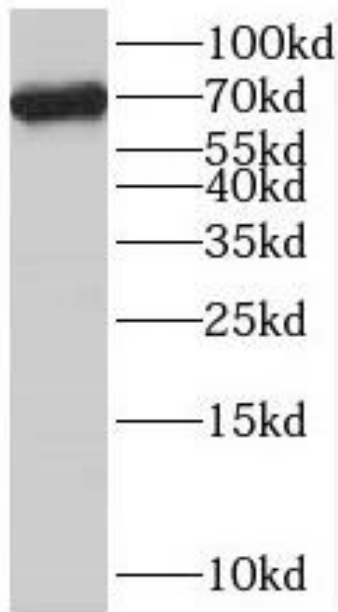
Fax: (0086)027-87800889 [www.fn-test.com](http://www.fn-test.com)



Immunohistochemistry of paraffin-embedded human endometrial cancer using FNab07629(SCFD1 antibody) at dilution of 1:50



IP Result of anti-SCFD1 (IP:FNab07629, 3ug; Detection:FNab07629 1:500) with HeLa cells lysate 2150ug.



A549 cells were subjected to SDS PAGE followed by western blot with FNab07629(SCFD1 antibody) at dilution of 1:500